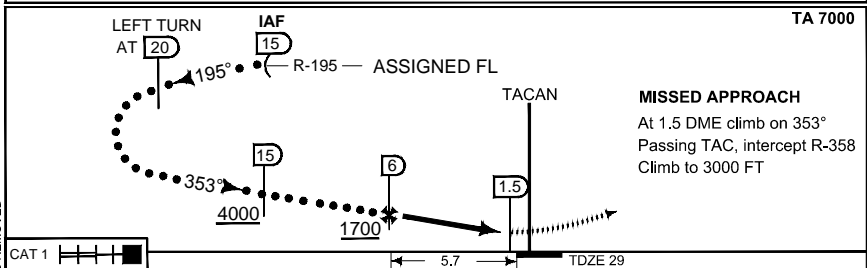
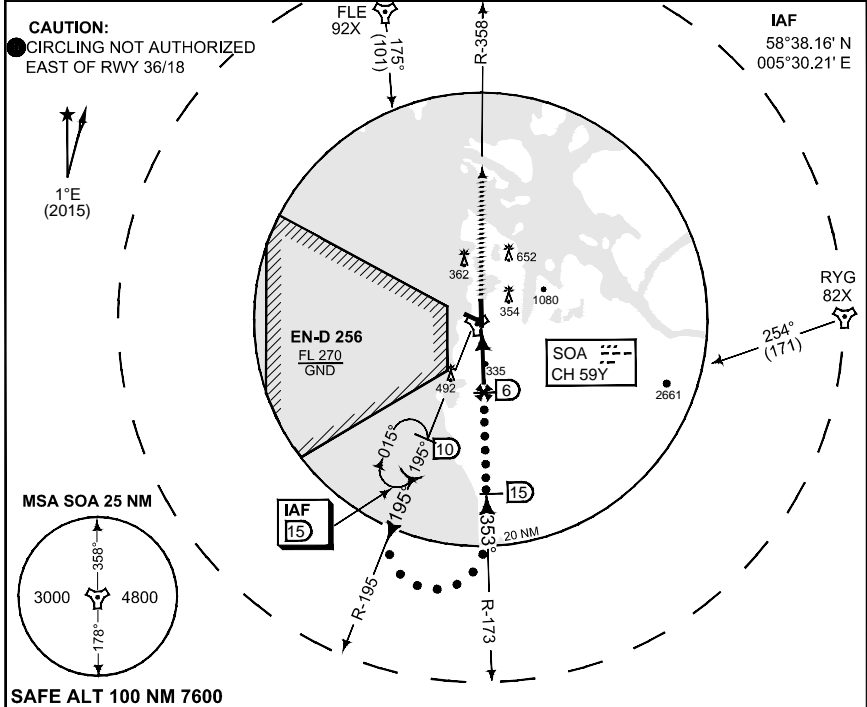


**TERPS  
INSTRUMENT APPROACH CHART**

AD ELEV 29

**HI-TACAN RWY 36  
SOLA (ENZV)**

ATIS 126.000	SOLA APP 119.600 363.675		SOLA TWR 118.350 279.050		SOLA GND 121.750
TACAN SOA CH 59Y	APP COURSE 353°	FAF ALT 1700	Descent GR 294 FT/NM	MDA 600	TDZE 29
				ALS 600 m	LDA 8385



	C	D	E
<b>S-TAC 36</b>	<b>600</b> - 2.0 571 (600 - 2.0)	<b>600</b> - 2.4 571 (600 - 2.4)	<b>600</b> - 2.8 571 (600 - 2.8)
<b>● CIRCLING</b>	<b>640</b> - 2.8 611 (700 - 2.8)	<b>680</b> - 3.2 651 (700 - 3.2)	<b>680</b> - 3.6 651 (700 - 3.6)

**HI-TACAN RWY 36**

58°52.60' N  
005°38.27' E

**SOLA (ENZV)**

CHANGES: DANGER AREAS REMOVED

RNOIAT 04 JAN 2018