

TERPS INSTRUMENT APPROACH CHART

AD ELEV 29

HI-ILS or LOC RWY 36
SOLA (ENZV)

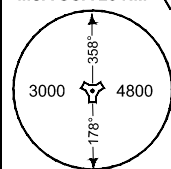
ATIS 126.000	SOLA APP 119.600 363.675	SOLA TWR 118.350 279.050	SOLA GND 121.750
LOCALIZER/DME SL 111.350/CH 59Y	APP COURSE 358°	GS INTCP ALT 2000	Descent GR 3.0°
		DA 229	TDZE 29
		ALS 600 m	LDA 8385

- CAUTION:**
- CIRCLING NOT AUTHORIZED EAST OF RWY 36/18
- CAUTION:**
- b) DO NOT EXCEED 868 FT/NM DESCEND GRADIENT AFTER SOA 2 DME (IF IMC)
- NOTE:**
- c) DME REQUIRED

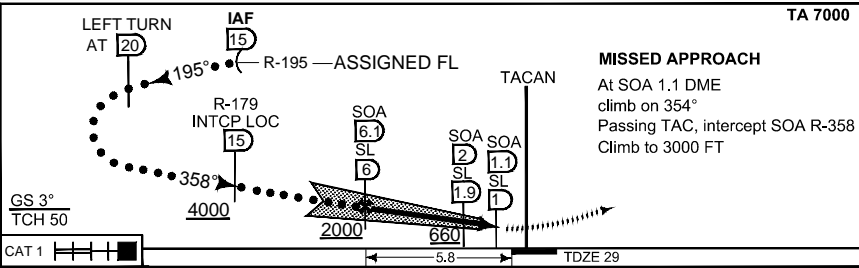
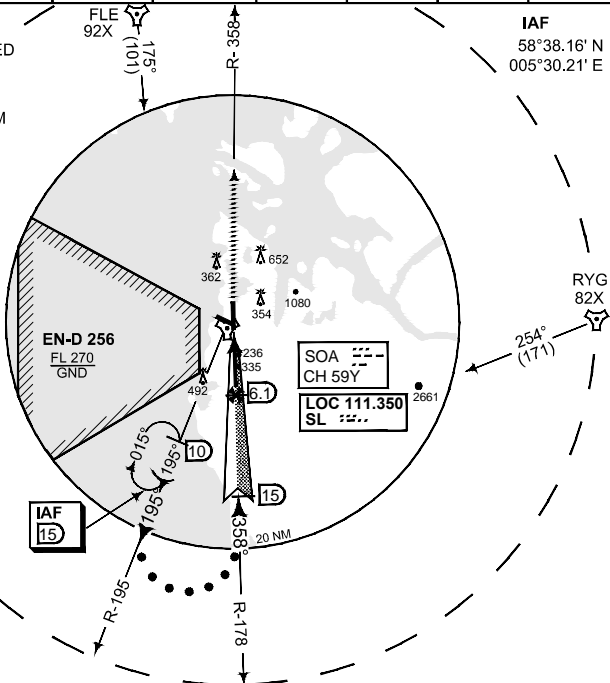
IAF
58°38.16' N
005°30.21' E



MSA SOA 25 NM



SAFE ALT 100 NM 7600



CATEGORY	C	D	E
S-ILS 36	229 - 1.2 200 (200 - 1.2)		
S-LOC 36	400 - 1.2 371 (400 - 1.2)	400 - 1.6 371 (400 - 1.6)	
● CIRCLING	640 - 2.8 611 (700 - 2.8)	680 - 3.2 651 (700 - 3.2)	680 - 3.6 651 (700 - 3.6)

HI-ILS or LOC RWY 36

58°52.60' N
005°38.27' E

SOLA (ENZV)

CHANGES DANGER AREAS REMOVED

RND/AF 04 JAN 2018