

**TERPS
INSTRUMENT APPROACH CHART**

AD ELEV 29

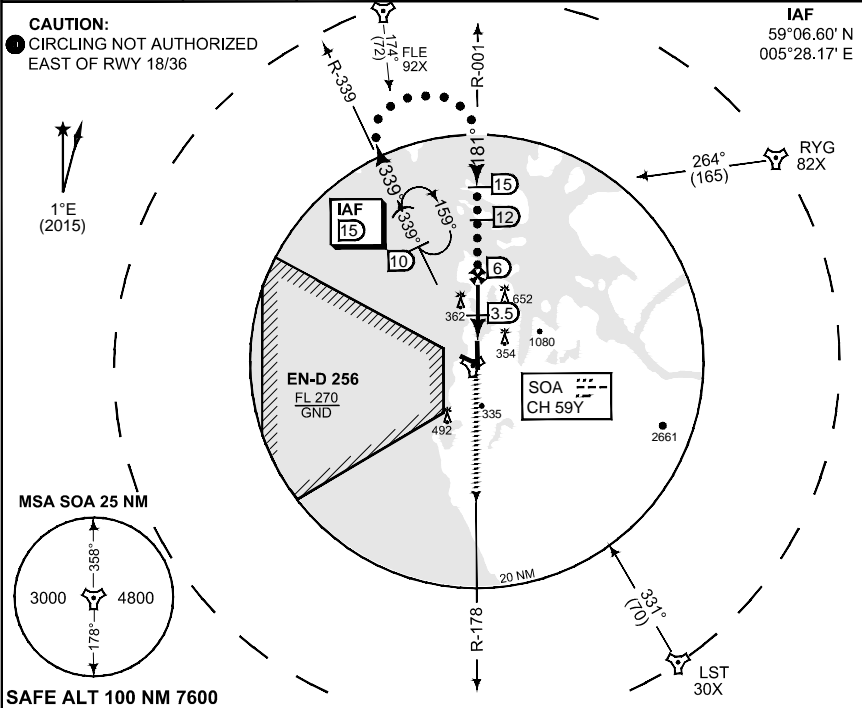
**HI-TACAN RWY 18
SOLA (ENZV)**

ATIS 126.000	SOLA APP 119.600 363.675		SOLA TWR 118.350 279.050		SOLA GND 121.750
TACAN SOA CH 59Y	APP COURSE 181°	FAF ALT 1800	Descent GR 403 FT/NM	MDA 580	TDZE 24
				ALS 510 m	LDA 8189

CAUTION:

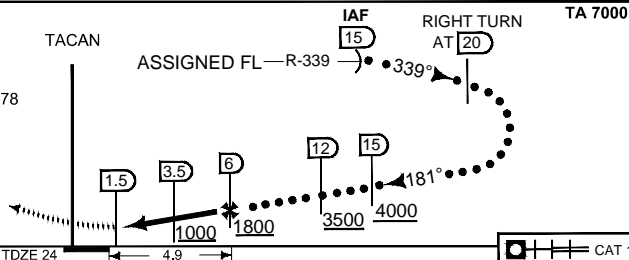
● CIRCLING NOT AUTHORIZED
EAST OF RWY 18/36

IAF
59°06.60' N
005°28.17' E



MISSED APPROACH

At 1.5 DME climb on 181°
Passing TAC, intercept R-178
Climb to 3000 FT



CATEGORY	C	D	E
S-TAC 18	580 - 2.0 556 (600 - 2.0)	580 - 2.4 556 (600 - 2.4)	580 - 2.8 556 (600 - 2.8)
● CIRCLING	640 - 611 (700 - 2.8)	680 - 651 (700 - 3.2)	680 - 651 (700 - 3.6)

HI-TACAN RWY 18

58°52.60' N
005°38.27' E

SOLA (ENZV)

CHANGES: DANGER AREAS REMOVED

RNGAF 04 JAN 2018