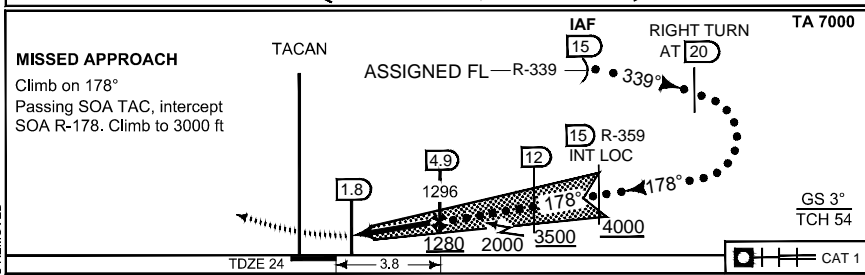
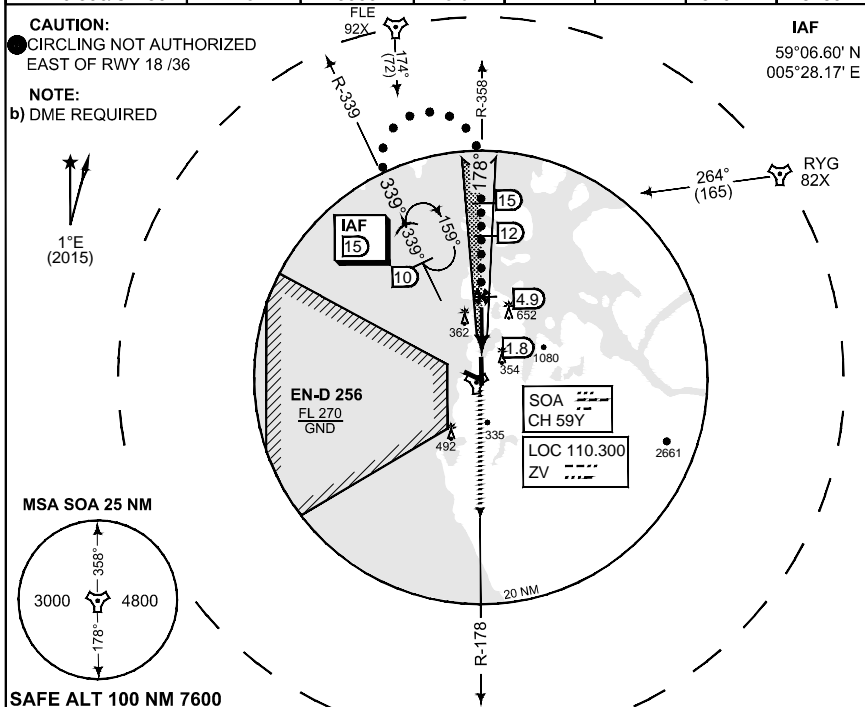


**TERPS
INSTRUMENT APPROACH CHART**

**HI-ILS or LOC RWY 18
SOLA (ENZV)**

ATIS 126.000		SOLA APP 119.600 363.675		SOLA TWR 118.350 279.050		SOLA GND 121.750	
LOCALIZER/DME ZV 110.300/CH 59Y	APP COURSE 178°	GS INTCP ALT 3000	Descent GR 3.0°	DA 224	TDZE 24	ALS 510 m	LDA 8189



CATEGORY	C	D	E
S-ILS 18	224 - 1.2 200 (200 - 1.2)		
S-LOC 18	540 - 1.6 516 (600 - 1.6)	540 - 2.4 516 (600 - 2.4)	
● CIRCLING	640 - 611 (700 - 2.8)	680 - 651 (700 - 3.2)	680 - 651 (700 - 3.6)

HI-ILS or LOC RWY 18

58°52.60' N
005°38.27' E

SOLA (ENZV)

CHANGES - DANGER AREAS REMOVED

RND/AF 04 JAN 2018