

**TERPS  
INSTRUMENT APPROACH CHART**

AD ELEV 29

**HI-ILS or LOC or TACAN RWY 11  
SOLA (ENZV)**

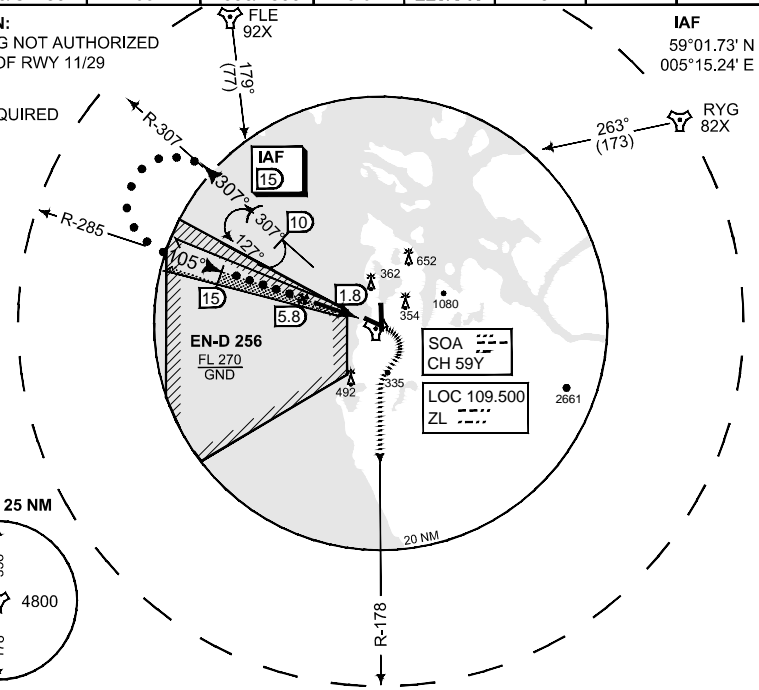
ATIS 126.000	SOLA APP 119.600 363.675		SOLA TWR 118.350 279.050		SOLA GND 121.750
LOCALIZER/TACAN ZL 109.500/CH 59Y	APP COURSE 105°	GS INTCP/FAF 2000/1500	Descent GR 3.0°	DA/MDA <b>229/340</b>	TDZE 15
				ALS 205 m	LDA 7214

**CAUTION:**

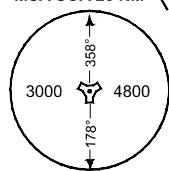
● CIRCLING NOT AUTHORIZED  
NORTH OF RWY 11/29

**NOTE:**

b) DME REQUIRED



MSA SOA 25 NM



SAFE ALT 100 NM 7600

LEFT TURN AT 20 IAF 15  
307° R-307 — ASSIGNED FL

TA 7000

15 R-285 INTERCEPT LOC 5.8  
105° 1490  
3000 2000 1500 1.8

TACAN

**MISSED APPROACH**

At 1.8 DME (LOC/TAC) climb 105° to 500 FT, turn right to intercept R-178. Climb to 3000 ft.

GS 3°  
TCH 51

S-ALS

4.8 TDZE 15

CATEGORY	C	D	E
S-ILS 11		<b>229</b> - 1.2 214 (300 - 1.2)	
S-LOC 11		<b>300</b> - 1.4 285 (300 - 1.4)	
S-TAC 11	<b>340</b> - 1.7 325 (400 - 1.7)	<b>340</b> - 2.0 325 (400 - 2.0)	
● CIRCLING	<b>640</b> - 611 (700 - 2.8)	<b>680</b> - 651 (700 - 3.2)	<b>760</b> - 731 (800 - 4.0)

CHANGES: DANGER AREAS REMOVED

**HI-ILS or LOC or TACAN RWY 11**

58°52.60' N  
005°38.27' E

**SOLA (ENZV)**

RNOIAT 04 JAN 2018