

**TERPS INSTRUMENT APPROACH CHART**

AD ELEV 56

**HI-ILS or LOC RWY 09 VAERNES (ENVA)**

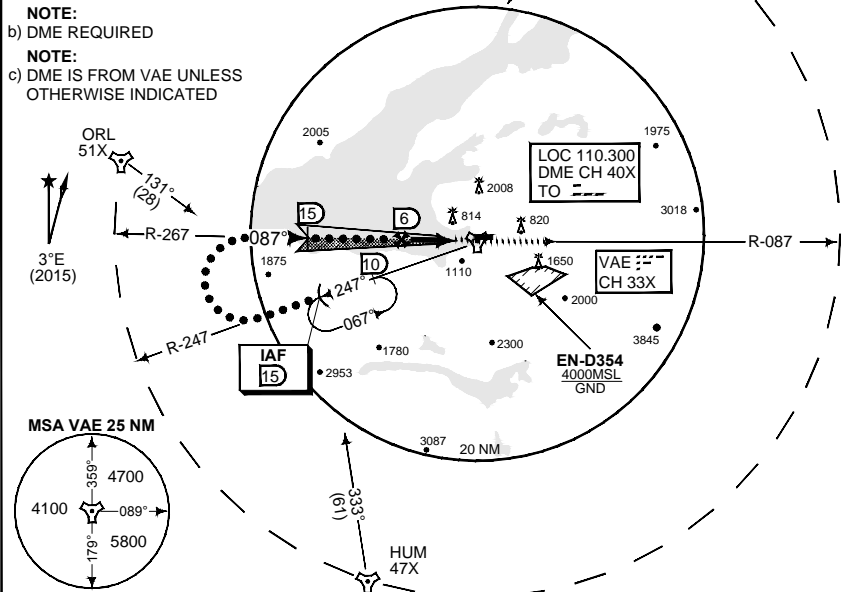
ATIS 127.550	VAERNES APP 118.600 240.500	VAERNES TWR 119.400 133.750 278.925 257.800					
LOCALIZER/DME TO 110.300/CH 40X	APP COURSE 087°	GS INTCP ALT 2500	Descent GR 3.0°	DA 571	TDZE 26	ALS 450 m	LDA 8024

**CAUTION:**  
 ● CIRCLING NOT AUTHORIZED  
 NORTH OF RWY 09/27  
 CIRCLING NOT AUTHORIZED AT NIGHT

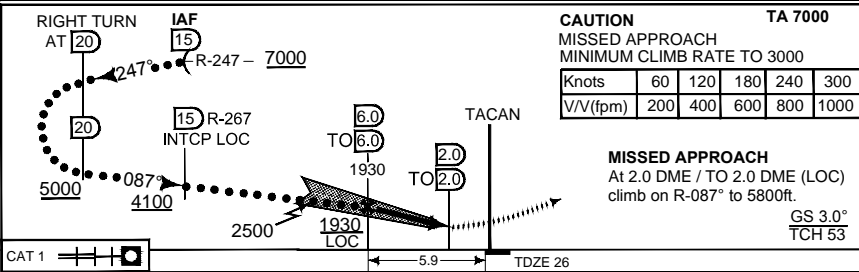
**NOTE:**  
 b) DME REQUIRED

**NOTE:**  
 c) DME IS FROM VAE UNLESS  
 OTHERWISE INDICATED

IAF  
 63°22.14' N  
 010°22.72' E



**SAFE ALT 100NM 9500**



**MISSED APPROACH**  
 At 2.0 DME / TO 2.0 DME (LOC)  
 climb on R-087° to 5800ft.

GS 3.0°  
 TCH 53

CATEGORY	C		D		E	
	571	- 2.0 545 (600-2.0/2.4)	571	- 2.4 545 (600-2.4/2.8)	571	- 2.8 545 (600-2.8/3.2)
S-ILS 09	571	- 2.0 545 (600-2.0/2.4)	571	- 2.4 545 (600-2.4/2.8)	571	- 2.8 545 (600-2.8/3.2)
S-LOC 09	620	- 2.0 594 (600-2.0/2.4)	620	- 2.4 594 (600-2.4/2.8)	620	- 2.8 594 (600-2.8/3.2)
● CIRCLING			1900 - 4.8 1844 (1900-4.8)			

CHANGES: ADDED DME TO

**HI-ILS or LOC RWY 09**

63°27.46'N  
 010°55.45'E

**VAERNES (ENVA)**

RNOAE 31 JUN 2019