

**TERPS
INSTRUMENT APPROACH CHART**

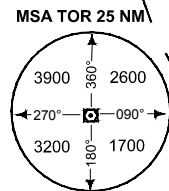
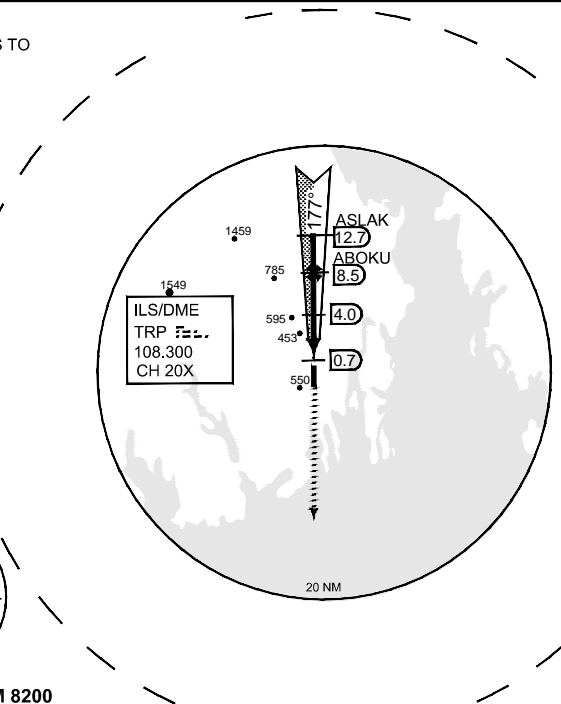
AD ELEV 285

**ILS M or LOC M RWY 18
TORP (ENTO)**

ATIS 119.075	GND 126.175	FARRIS APP 134.050 275.400		TORP TWR 118.650			
ILS/DME TRP 108.300/CH 20X	APP COURSE 177°	GS INTCP ALT 3000	Descent GR 3.0°	DA 490	TDZE 285	ALS 900 m	LDA 8034

NOTE:
a) RADAR VECTORS TO FINAL REQUIRED

NOTE:
b) DME REQUIRED

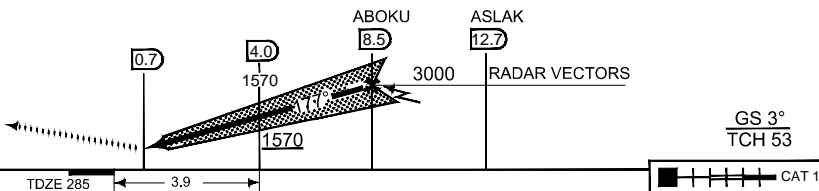


SAFE ALT 100 NM 8200

MISSED APPROACH

Climb 177° to 3000 ft.

TA 7000



MIPS	CATEGORY	C		D		E		
		DA	GS	DA	GS	DA	GS	
	S-ILS 18	490 - 1.2 205 (300 - 1.2)						
	S-LOC 18	760	- 1.6 475 (500 - 1.6)	760	- 2.0 475 (500 - 2.0)	760	- 2.4 475 (500 - 2.4)	
	CIRCLING	860	- 2.4 575 (600 - 2.4)	900	- 3.2 615 (700 - 3.2)	900	- 3.6 615 (700 - 3.6)	

ILS M or LOC M RWY 18

59°11.20' N
010°15.52' E

TORP (ENTO)

CHANGES - PROC NAME

RNOAF 08 DEC 2016