

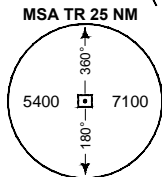
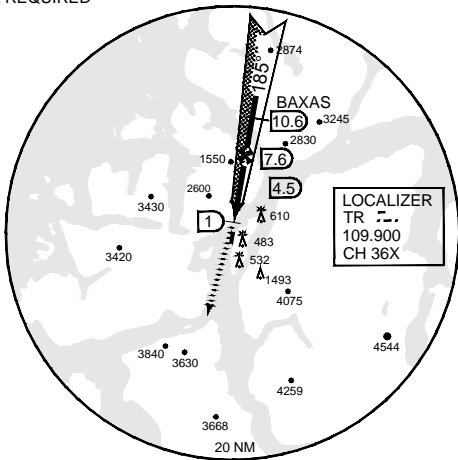
**TERPS
INSTRUMENT APPROACH CHART**

AD ELEV 32

**ILS M or LOC M RWY 19
TROMSOE (ENTC)**

ATIS 126.125		TROMSOE APP 123.750			TROMSOE TWR 118.300		
LOCALIZER/DME TR 109.900/CH 36X	APP COURSE 185°	GS INTCP ALT 4500	Descent GR 4.0°	DA 500	TDZE 16	ALS 720 m	LDA 6571

- CAUTION:**
- a) STEEP ILS GS (4.0°)
 - NOTE:**
 - b) RADAR VECTORS TO FINAL REQUIRED
 - NOTE:**
 - c) DME REQUIRED



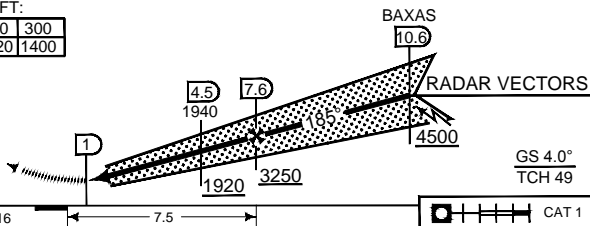
SAFE ALT 100NM 8600

CAUTION:
MISSED APPROACH
MINIMUM CLIMB RATE TO 5000 FT:

Knots	60	120	180	240	300
V/V(fpm)	280	560	840	1120	1400

TA 7000

MISSED APPROACH
At 1 DME (LOC)
climb on 194° to 5400 ft



CATEGORIES	C		D		E	
	DA	GS	DA	GS	DA	GS
S-ILS 19	500	-1.2 484 (500-1.2/2.0)	500	-1.6 484 (500-1.6/2.4)	500	-2.0 484 (500-2.0/2.8)
S-LOC 19	810	-2.8 794 (800-2.8/3.6)	1100 -4.0 1084 (1100 4.0/4.8)			
CIRCLING	2760	-4.8 2728 (2800-4.8)	2960	-4.8 2928 (3000-4.8)	NOT AUTHORIZED	

ILS M or LOC M RWY 19

69°40.88N
018°55.17E

TROMSOE (ENTC)

CHANGES: DANGER AREAS WITHDRAWN

RNGAIF 16 AUG 2018