

**TERPS
INSTRUMENT APPROACH CHART**

**ILS M or LOC M RWY 01
TROMSOE (ENTC)**

AD ELEV 32

ATIS 126.125		TROMSOE APP 123.750			TROMSOE TWR 118.300		
LOCALIZER/DME TC 110.900/CH 46X	APP COURSE 005°	GS INTCP ALT 5000	Descent GR 4.0°	DA 813	TDZE 31	ALS 720 m	LDA 7844

WARNING:

- DO NOT DESCEND BELOW 5000 FT ON GS BEFORE PASSING ETUTU

CAUTION:

- b) STEEP ILS GS (4.0°).

NOTE:

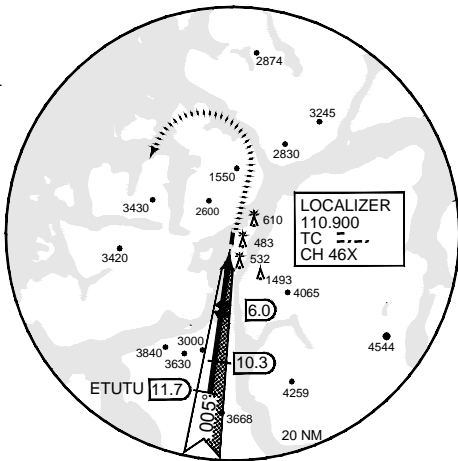
- c) RADAR VECTORS TO FINAL REQUIRED

NOTE:

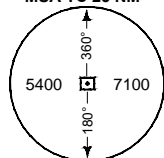
- d) DME REQUIRED



8° E
(2015)



MSA TC 25 NM



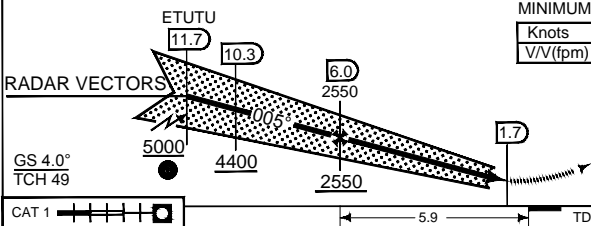
SAFE ALT 100NM 8600

CAUTION:

TA 7000

MISSED APPROACH
MINIMUM CLIMB RATE TO 4500 FT:

Knots	60	120	180	240	300
V/V (fpm)	240	480	720	960	1200



MISSED APPROACH

At 1.7 DME (LOC) climb on 013° to 4500 ft, then turn left to 195° Climb to 7100 ft

CAT 1 5.9 TDZE 31

MIPS	CATEGORY	C		D		E				
		DA	GS	DA	GS	DA	GS			
	S-ILS 01	813	-2.8	781 (800-2.8/3.6)	813	-3.2	781 (800-3.2/4.0)	813	-3.6	781 (800-3.6/4.4)
	S-LOC 01	820	-2.8	788 (800-2.8/3.6)	820	-3.2	788 (800-3.2/4.0)	820	-3.6	788 (800-3.6/4.4)
	CIRCLING	2760	-4.8	2728 (2800-4.8)	2960	-4.8	2928 (3000-4.8)	NOT AUTHORIZED		

ILS M or LOC M RWY 01

69°40.89N
018°55.06E

TROMSOE (ENTC)

CHANGES: DANGER AREAS WITHDRAWN

RNOAF: 16 AUG 2018