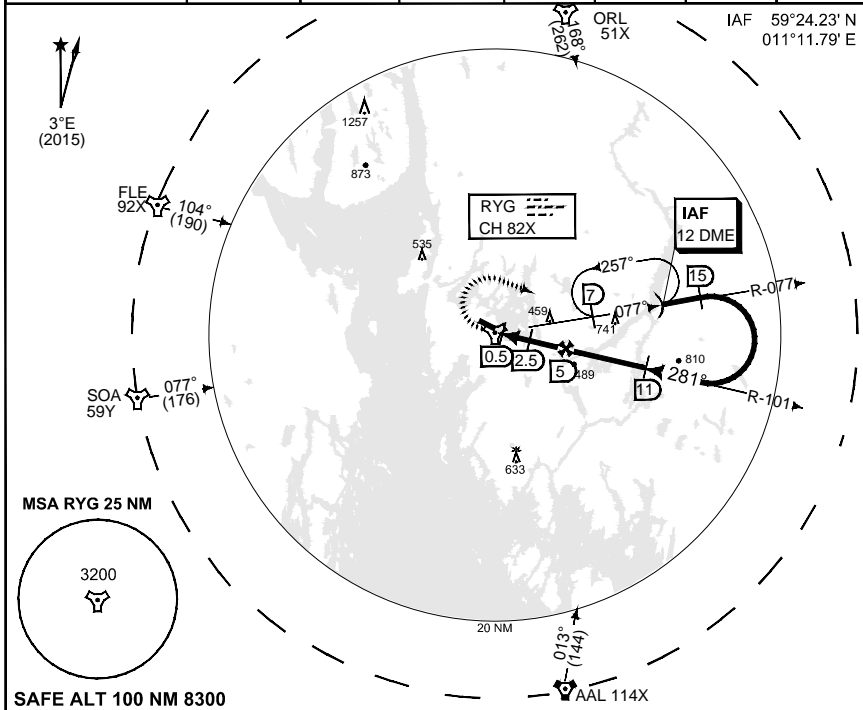


MIPS INSTRUMENT APPROACH CHART

AD ELEV 173

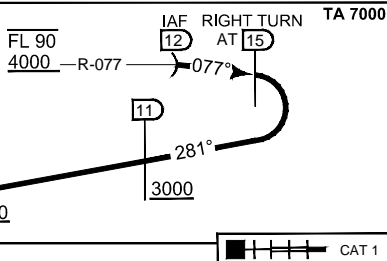
TACAN RWY 30
RYGGE (ENRY)

ATIS 136.175	RYGGE GND 121.700	RYGGE TWR 119.500 122.100	308.850	FARRIS APP (WEST) 134.050	FARRIS APP (EAST) 124.350
TACAN RYG CH 82X	APP COURSE 281°	FAF ALT 2000	Descent GR 5.6%	MDA 560	THR ELEV 169
				ALS 720 m	LDA 8011



MISSED APPROACH

At 0.5 DME climb on HDG 294° to 1000 ft, then turn right and intercept R-077 inbound IAF climbing to 4000 ft and hold



CATEGORY	AB	C	D	E
S-TAC 30	560 - 800 391 (400 -0.8/1.6)	560 - 1200 391 (400 -1.2/1.6)	560 - 1200 391 (400 -1.2/2.0)	560 - 1.6 391 (400 -1.6/2.4)
CIRCLING	670 - 2.8 497 (500 -2.8)	860 - 3.7 687 (700 -3.7)	910 - 4.6 737 (800 -4.6)	1150 -6.5 977 (1000 -6.5)

TACAN RWY 30

59°22.73' N
010°47.13' E

RYGGE (ENRY)

CHANGES: MAGVAR, EDITORIAL

RNGAIF 23 JUL 2015