

MIPS
INSTRUMENT APPROACH CHART

AD ELEV 173

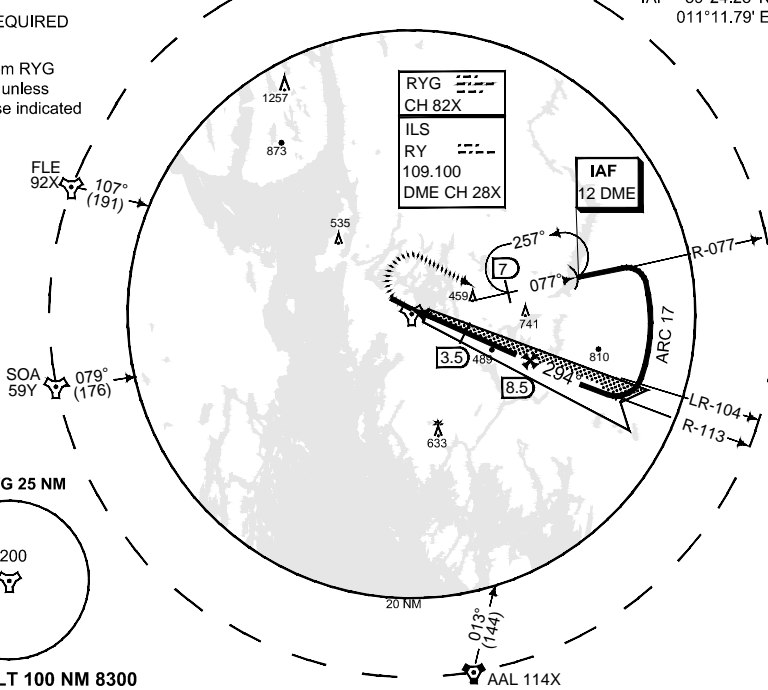
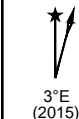
ILS M or LOC M RWY 30
RYGGE (ENRY)

ATIS 136.175	RYGGE GND 121.700	RYGGE TWR 119.500 122.100 308.850	FARRIS APP (WEST) 134.050	FARRIS APP (EAST) 124.350
ILS/DME RY 109.100/CH 28X	APP COURSE 294°	GS INTCP ALT 3000	GS 3.0°	DA SEE CAT
			THR ELEV 169	ALS 720 m
			LDA 8011	

IAF 59°24.23' N
011°11.79' E

NOTE:
a) DME REQUIRED

NOTE:
b) DME from RYG TACAN unless otherwise indicated

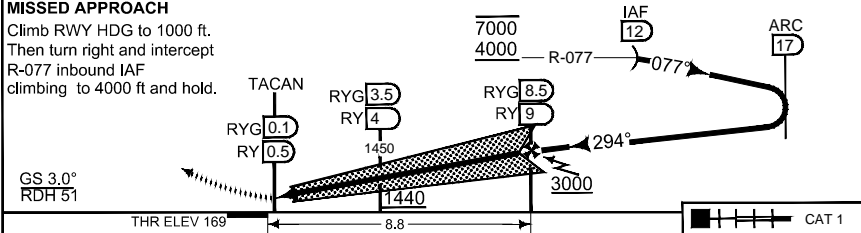


SAFE ALT 100 NM 8300

TA 7000

MISSED APPROACH

Climb RWY HDG to 1000 ft. Then turn right and intercept R-077 inbound IAF climbing to 4000 ft and hold.



THR ELEV 169 CAT 1

CATEGORY	AB	C	D	E
S-ILS 30	377 - 800 208 (300-0.8/1.6)	385 - 800 216 (300-0.8/1.6)	396 - 800 227 (300-0.8/1.6)	
S-LOC 30	580 - 800 411 (500-0.8/1.6)	580 - 1200 411 (500-1.2/2.0)		580 - 1.6 411 (500-1.6/2.4)
CIRCLING	670 - 2.8 497 (500-2.8)	860 - 3.7 687 (700-3.7)	910 - 4.6 737 (800-4.6)	1150 - 6.5 977 (1000-6.5)

ILS M or LOC M RWY 30

59°22.73' N
010°47.13' E

RYGGE (ENRY)

CHANGES: PROC NAME
MIPS

RNAVF 08 DEC 2016