

MIPS
INSTRUMENT APPROACH CHART

AD ELEV 173

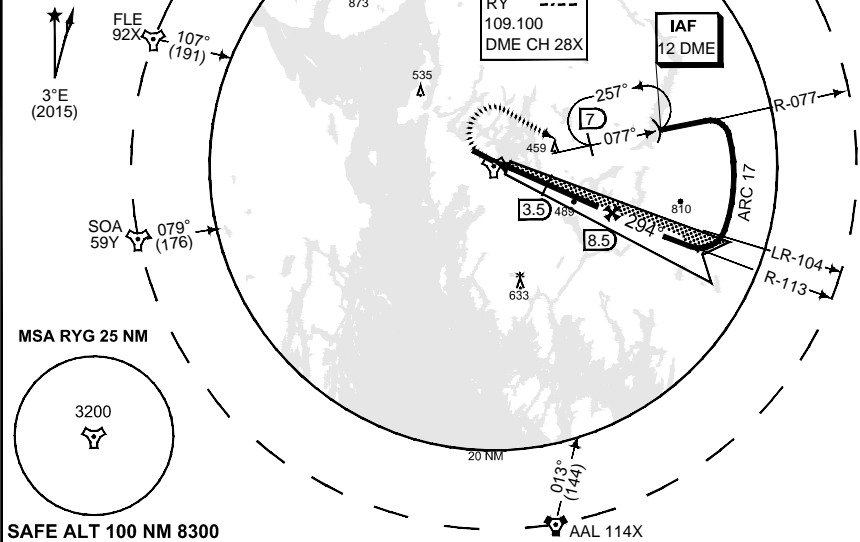
HPMA ILS or LOC RWY 30
RYGGE (ENRY)

ATIS 136.175	RYGGE GND 121.700	RYGGE TWR 119.500 122.100 308.850	FARRIS APP (WEST) 134.050	FARRIS APP (EAST) 124.350			
ILS/DME RY 109.100/CH 28X	APP COURSE 294°	GS INTCP ALT 3000	GS 3.0°	DA 369	THR ELEV 169	ALS 720 m	LDA 8011

IAF 59°24.23' N
011°11.79' E

NOTE:
a) DME REQUIRED

NOTE:
b) DME from RYG
TACAN unless
otherwise indicated

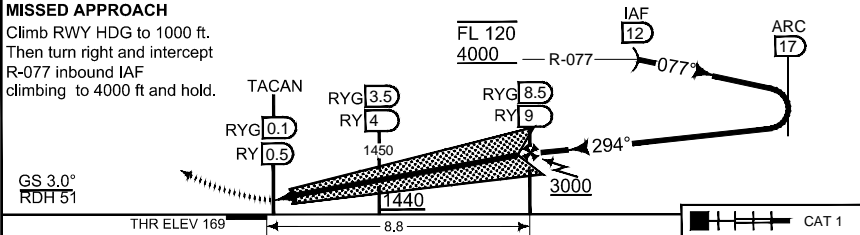


SAFE ALT 100 NM 8300

TA 7000

MISSED APPROACH

Climb RWY HDG to 1000 ft.
Then turn right and intercept
R-077 inbound IAF
climbing to 4000 ft and hold.



CHANGES: PROC NAME, NOTE

CATEGORY	HPMA
S-ILS 30	369 -800 200 (200-0.8/1.6)
S-LOC 30	580 -1.6 411 (500-1.6/2.4)
CIRCLING	730 -3.2 557 (600-3.2)

HPMA ILS or LOC RWY 30

59°22.73' N
010°47.13' E

RYGGE (ENRY)

RNGAUF 18 AUG 2016