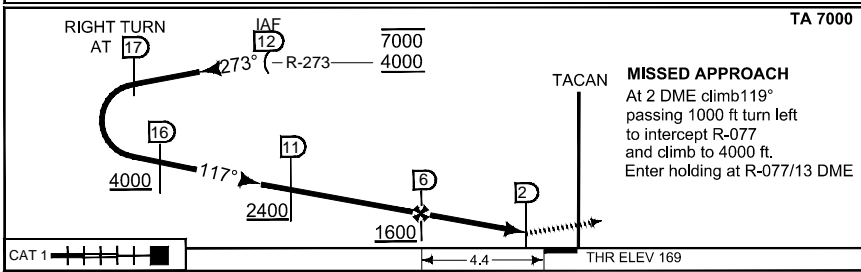
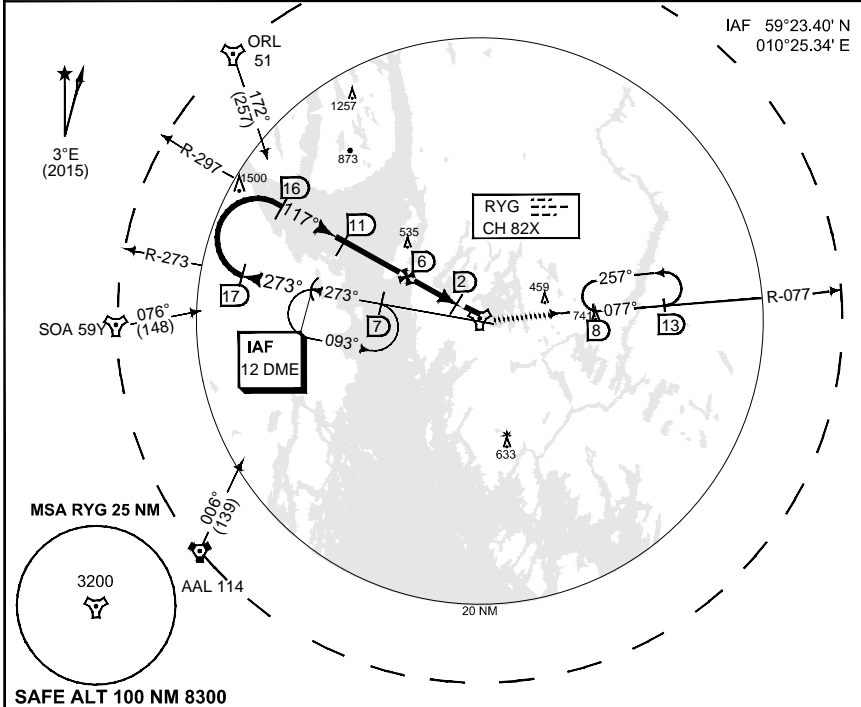


MIPS INSTRUMENT APPROACH CHART

AD ELEV 173

TACAN RWY 12 RYGGE (ENRY)

ATIS 136.175	RYGGE GND 121.700	RYGGE TWR 119.500 122.100	308.850	FARRIS APP (WEST) 134.050	FARRIS APP (EAST) 124.350
TACAN RYG CH 82X	APP COURSE 117°	FAF ALT 1600	Descent GR 5.2%	MDA 550	THR ELEV 169
				ALS 900 m	LDA 8011



CAT 1	4.4	THR ELEV 169		
TA 7000				
CATEGORY	AB	C	D	E
S-TAC 12	550 - 800 381 (400-0.8/1.6)	550 - 1200 381 (400-1.2/1.6)	550 - 1200 381 (400-1.2/2.0)	
CIRCLING	670 - 2.8 497 (500-2.8)	860 - 3.7 687 (700-3.7)	910 - 4.6 737 (800-4.6)	1150 - 6.5 977 (1000-6.5)

TACAN RWY 12

59°22.73' N
010°47.13' E

RYGGE (ENRY)

CHANGES: MAGVAR, EDITORIAL

RNAIF 23 JUL 2015