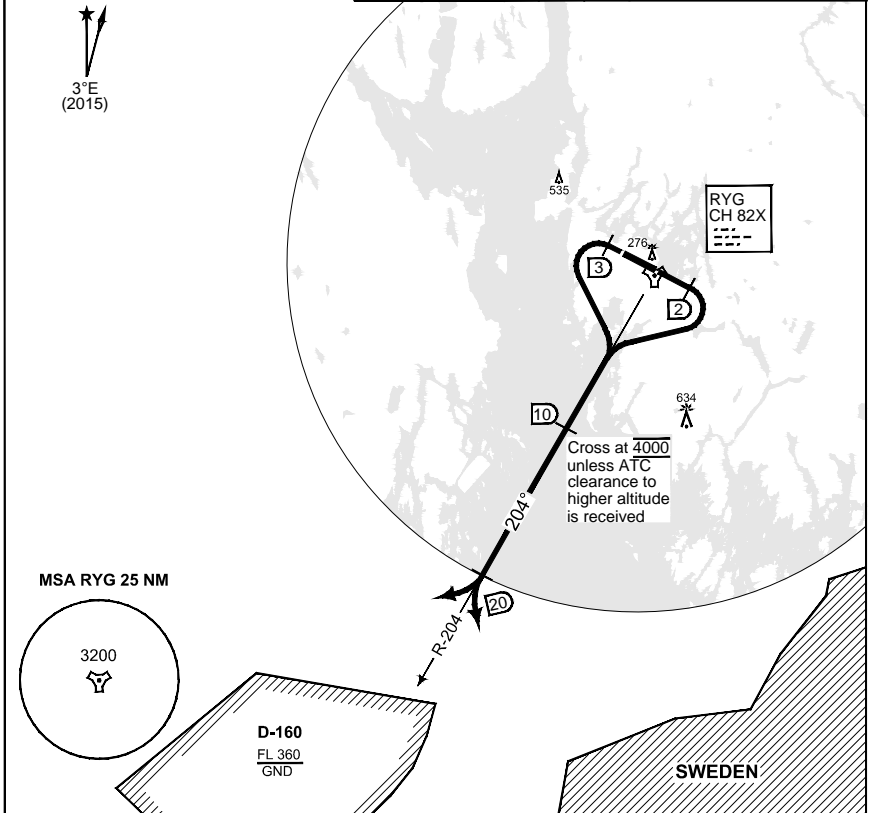


**PANS-OPS
INSTRUMENT DEPARTURE CHART**

**SID WEST
RYGGE (ENRY)**

ATIS 136.175		RYGGE TWR 119.500 122.100 308.850			FARRIS APP 124.350 134.050							
OSLO CONTROL SECTOR EAST 125.050	279.000	AD ELEV 173	RWY 12	Knots V/V (fpm)	60 330	120 660	180 990	240 1320	300 1650	360 1980	to 4000	reason ATC
			30	V/V (fpm)	220	440	660	880	1100	1320		



SAFE ALT 100 NM 8200 **TA 7000**

SID WEST RWY 12	<p>Minimum 5.4% climb gradient / 3.1° climb angle required to 4000 ft due to ATC. When instructed by TWR, contact Farris approach 124.350. Climb RWY heading to 1000 ft or 2 DME RYG, whichever occurs first, then turn right to intercept R-204. Cross 10 DME on R-204 at 4000 ft, or higher as cleared by ATC.</p>
SID WEST RWY 30	<p>Minimum 3.5% climb gradient / 2.0° climb angle required to 4000 ft due to ATC. When instructed by TWR, contact Farris approach 124.350. Climb RWY heading to 1000 ft or 3 DME RYG, whichever occurs first, then turn left to intercept R-204. Cross 10 DME on R-204 at 4000 ft, or higher as cleared by ATC.</p>

RYGGE SID WEST

59°22.73' N
010°47.13' E

RYGGE (ENRY)

CHANGES: COMMUNICATIONS

RNOA/P 08 DEC 2016