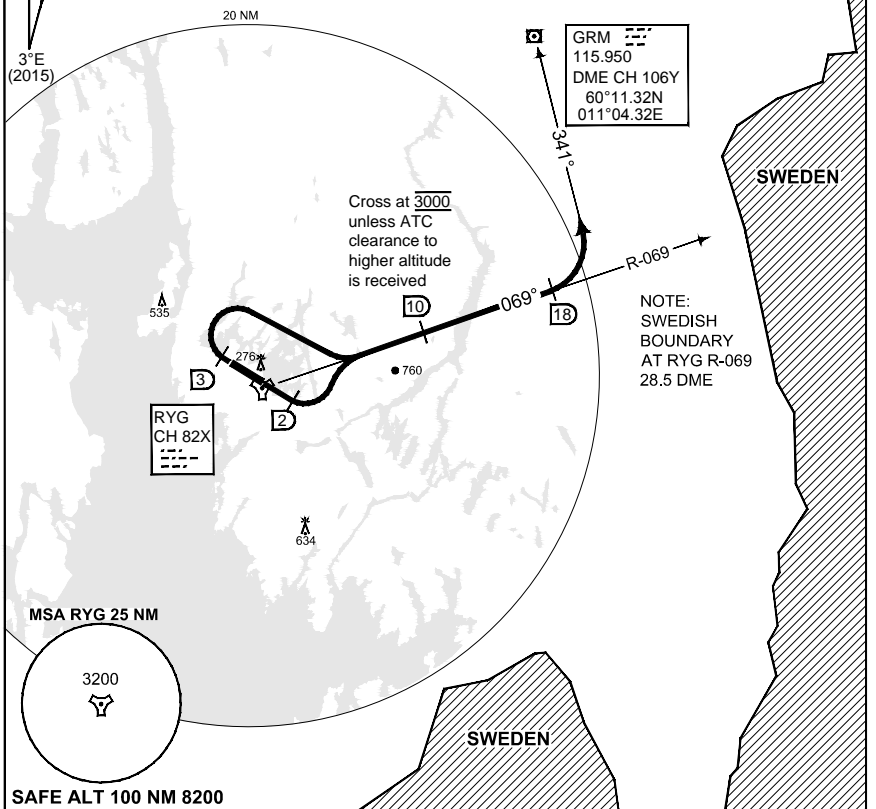


**PANS-OPS
INSTRUMENT DEPARTURE CHART**

**SID EAST
RYGGE (ENRY)**

ATIS 136.175		RYGGE TWR 119.500 122.100 308.850				FARRIS APP 124.350 134.050						
OSLO CONTROL SECTOR EAST 125.050 279.000		AD ELEV 173	RWY 12	Knots V/V (fpm)	60 280	120 560	180 840	240 1120	300 1400	360 1680	to 3000	reason ATC
			30	V/V (fpm)	340	680	1020	1360	1700	2040		



SAFE ALT 100 NM 8200 **TA 7000**

SID EAST RWY 12	Minimum 4.6% climb gradient / 2.7° climb angle required to 3000 ft due to ATC. When instructed by TWR, contact Farris approach 124.350. Climb RWY heading to 1000 ft or 2 DME RYG, whichever occurs first, then turn left to intercept R-069. Cross 10 DME on R-069 at 3000 ft, or higher as cleared by ATC.
SID EAST RWY 30	Minimum 5.5% climb gradient / 3.2° climb angle required to 3000 ft due to ATC. When instructed by TWR, contact Farris approach 124.350. Climb RWY heading to 1000 ft or 3 DME RYG, whichever occurs first, then turn right to intercept R-069. Cross 10 DME on R-069 at 3000 ft, or higher as cleared by ATC.

RYGGE SID EAST 59°22.73' N
010°47.13' E **RYGGE (ENRY)**

CHANGES: COMMUNICATIONS

RNOA/F 08 DEC 2016