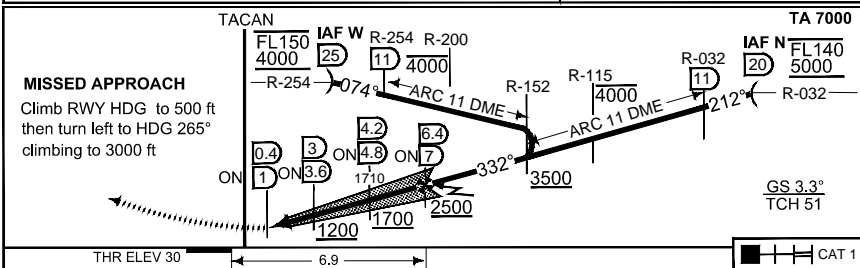
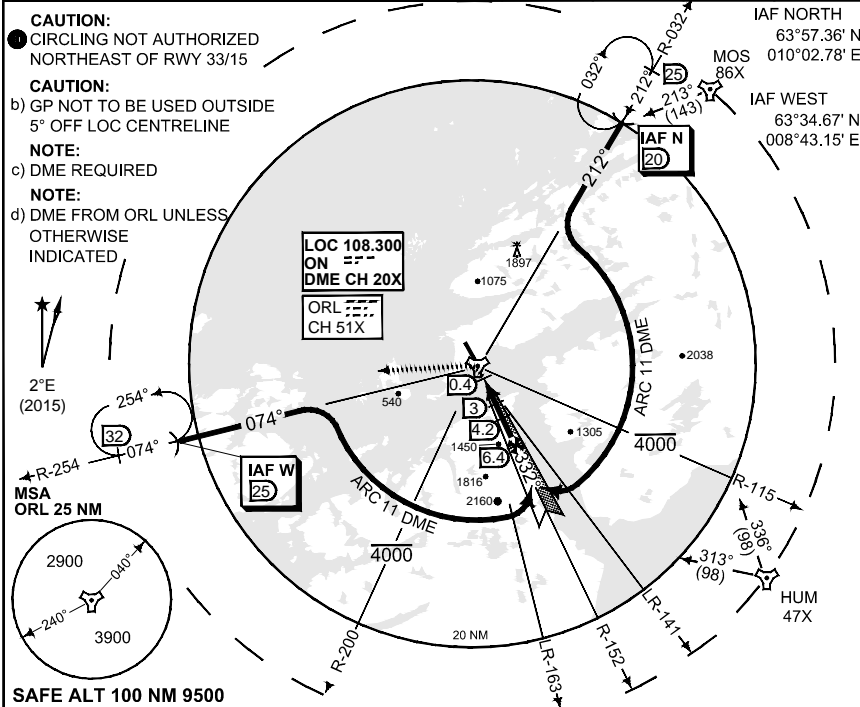


**PANS-OPS
INSTRUMENT APPROACH CHART**

**ILS M or LOC M RWY 33
OERLAND (ENOL)**

ATIS 119.325		OERLAND ARR 126.200 278.650		OERLAND APP 118.250 268.200		OERLAND TWR 118.700 308.850	
ILS/DME ON 108.300/CH 20X	APP COURSE 332°	FAF ALT 2500	GS 3.3°	DA See CAT	THR ELEV 30	ALS 450 m	LDA 9842



CATEGORY	B	C	D	E
S-ILS 33	230 - 1.2	200 (200 - 1.2/1.2)	232 - 1.2 202 (300 - 1.2/1.2)	242 - 1.2 212 (300 - 1.2/1.2)
S-LOC 33	360 - 1.2 330 (400 - 1.2/1.6)			
● CIRCLING	560 - 2.8 530 (600 - 2.8)	990 - 3.7 960 (1000 - 3.7)	1000 - 4.6 970 (1000 - 4.6)	1980 - 6.5 1950 (2000 - 6.5)

ILS M or LOC M RWY 33

63°42.00' N
009°36.16' E

OERLAND (ENOL)

CHANGES: ARP COORD
MIPS

RNOA/F 16 AUG 2018