

**PANS-OPS  
INSTRUMENT APPROACH CHART**

AD ELEV 30

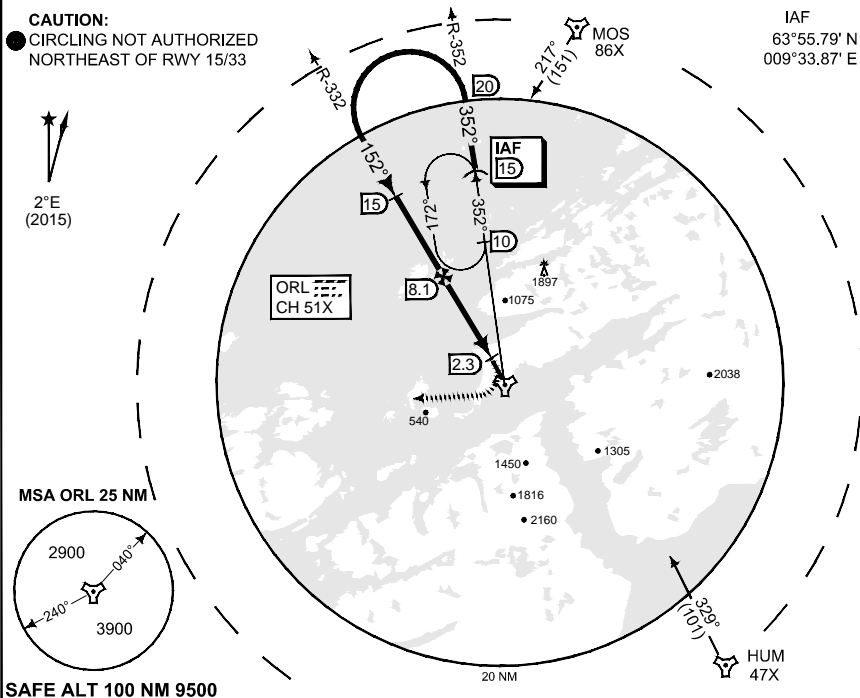
**TACAN RWY 15  
OERLAND (ENOL)**

ATIS 119.325	OERLAND ARR 126.200 278.650	OERLAND APP 118.250 268.200	OERLAND TWR 118.700 308.850				
TACAN ORL CH 51X	APP COURSE 152°	FAF ALT 2000	Descent GR 5.27%	MDA 370	THR ELEV 20	ALS 720 m	LDA 9842

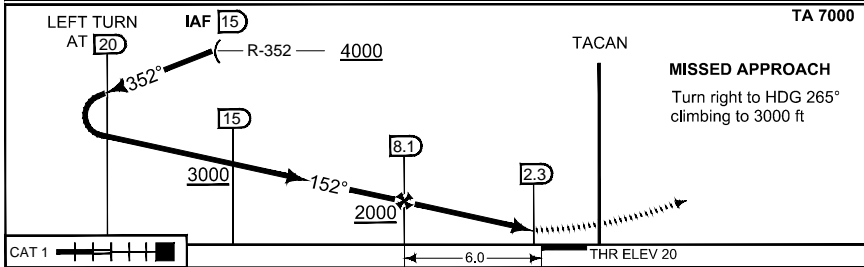
**CAUTION:**

● CIRCLING NOT AUTHORIZED  
NORTHEAST OF RWY 15/33

IAF  
63°55.79' N  
009°33.87' E



SAFE ALT 100 NM 9500



CATEGORY	B	C	D	E
S-TAC 15	370 - 0.9 350 (400 - 0.9/1.6)			
● CIRCLING	560 - 1.6 530 (600 - 1.6)	990 - 2.4 960 (1000 - 2.4)	1000 - 3.6 970 (1000 - 3.6)	1980 - 3.6 1950 (2000 - 3.6)

CHANGES - ARP COORD

RNAAF 16 AUG 2018

**TACAN RWY 15**

63°42.00' N  
009°36.16' E

**OERLAND (ENOL)**