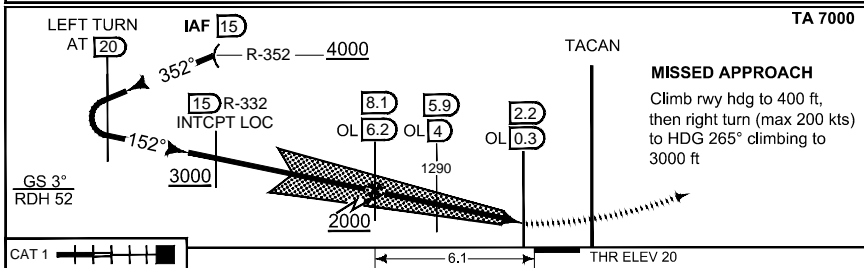
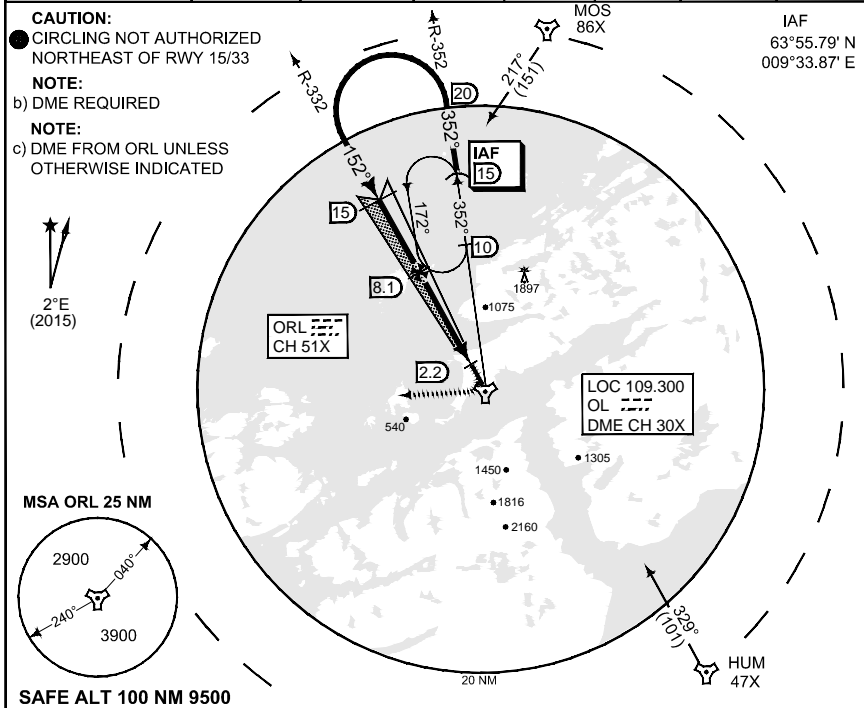


**PANS-OPS
INSTRUMENT APPROACH CHART**

**ILS M or LOC M RWY 15
OERLAND (ENOL)**

ATIS 119.325		OERLAND ARR 126.200 278.650		OERLAND APP 118.250 268.200		OERLAND TWR 118.700 308.850		
ILS/DME OL 109.300/CH 30X		APP COURSE 152°		GS 3.0°	DA 220	THR ELEV 20	ALS 720 m	LDA 9842



CATEGORY	A	B	C	D
S-ILS 15	220 - 0.8 200 (200 - 0.8/1.6)			
S-LOC 15	360 - 1.2 340 (400 - 1.2/1.6)			360 - 1.2 340 (400 - 1.2/2.0)
● CIRCLING	470 -1.9 440 (500-1.9)	560 -2.8 530 (600-2.8)	990 -3.7 960 (1000-3.7)	1000 -4.6 970 (1000-4.6)

ILS M or LOC M RWY 15 **OERLAND (ENOL)**

63°42.00' N
009°36.16' E

CHANGES: ARP COORD
MIPS

RNOA/F 16 AUG 2018