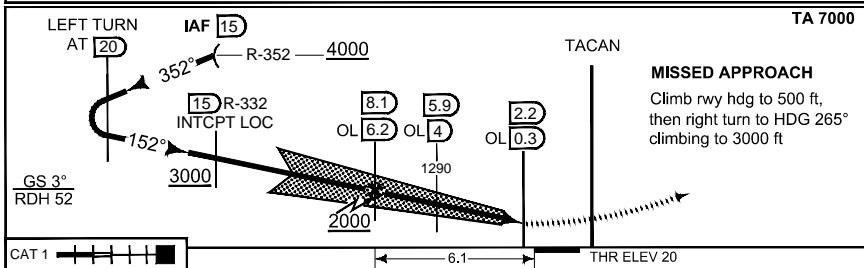
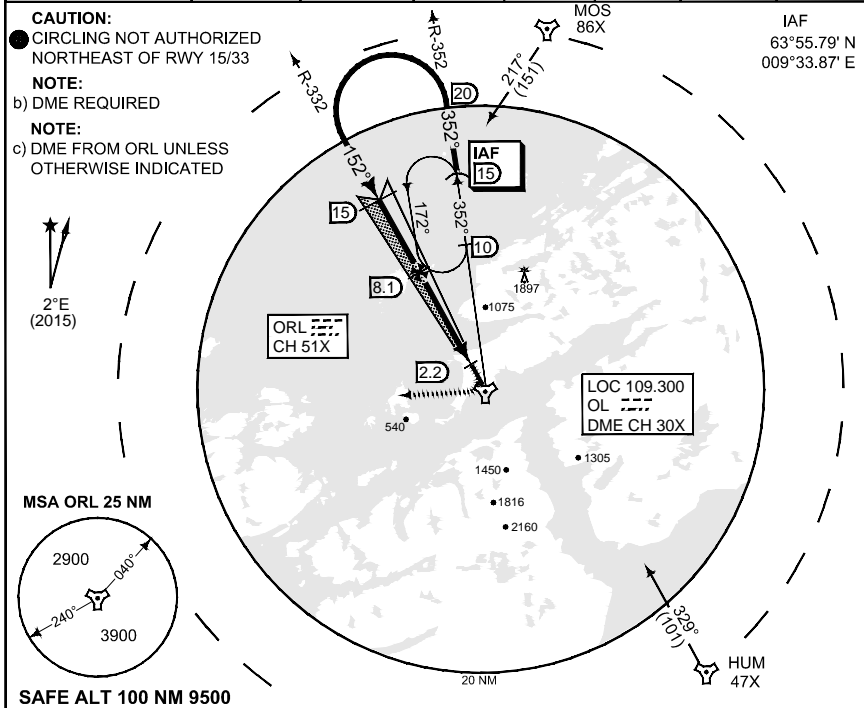


MIPS INSTRUMENT APPROACH CHART

HPMA ILS or LOC RWY 15 OERLAND (ENOL)

ATIS 119.325	OERLAND ARR 126.200 278.650	OERLAND APP 118.250 268.200	OERLAND TWR 118.700 308.850
ILS/DME OL 109.300/CH 30X	APP COURSE 152°	GS 3.0°	DA 220
		THR ELEV 20	ALS 720 m
			LDA 9842



CATEGORY	HPMA
S-ILS 15	220 - 0.8 200 (200 - 0.8/1.6)
S-LOC 15	360 - 1.2 340 (400 - 1.2/2.0)
● CIRCLING	600 - 3.2 570 (600 - 3.2)

HPMA ILS or LOC RWY 15 OERLAND (ENOL)

63°42.00' N 009°36.16' E

CHANGES: ARP COORD

RNOAIF 16 AUG 2018