

**PANS-OPS
INSTRUMENT APPROACH CHART**

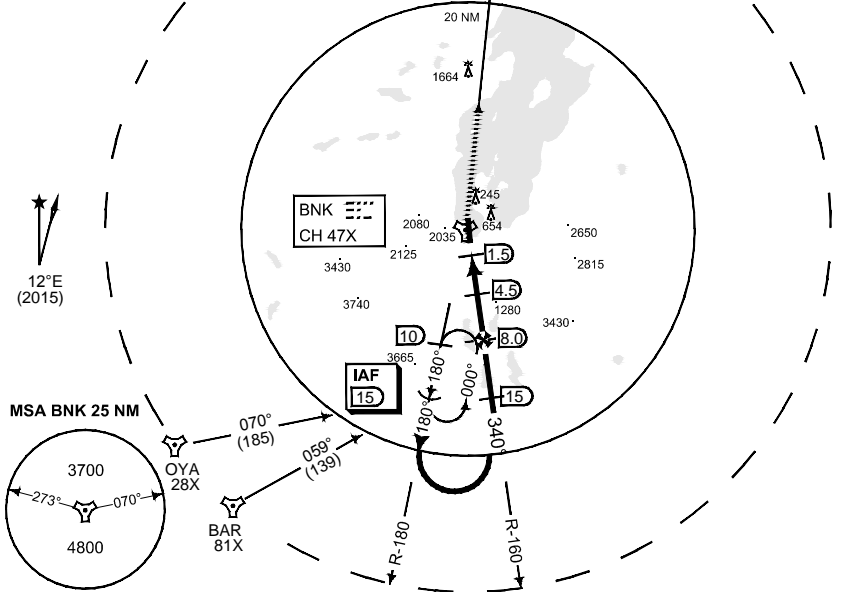
AD ELEV 25

**TACAN RWY 34
BANAK (ENNA)**

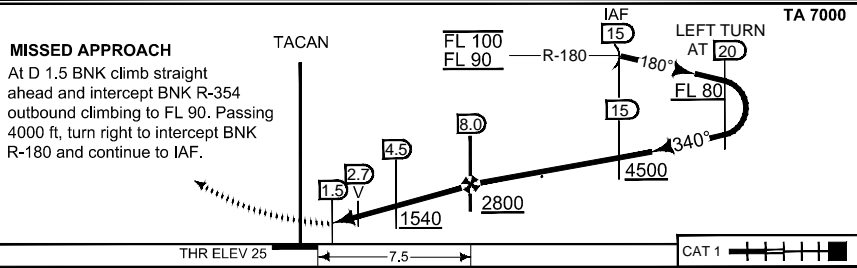
ATIS 136.325		BANAK TWR 118.900 118.050 362.300 257.800					
TACAN BNK CH 47X	APP COURSE 340°	FAF ALT 2800	Descent GR 6.0% (3.4°)	MDA 880	THR ELEV 25	ALS 737 m	LDA 8543

CAUTION:
● CIRCLING NOT AUTHORIZED
WEST OF RWY 34/16
DUE TO HIGH TERRAIN

IAF
69°49.28' N
024°49.19' E



SAFE ALT 100 NM 6900



CHANGES TOTALLY REVERSED

CATEGORY	A	B	C	D	E
S-TAC 34	880 - 1.3 855 (900 - 1.3/1.9)	880 - 2.4 855 (900 - 2.4/2.4)			
● CIRCLING	880 - 1.9 675 (700 - 1.9)	970 - 1.9 945 (1000 - 1.9)	1350 - 2.4 1325 (1400 - 2.4)	2210 - 3.6 2185 (2200 - 3.6)	3190 - 3.6 3165 (3200 - 3.6)

TACAN RWY 34

70°04.00' N
024°58.44' E

BANAK (ENNA)

RNGAUF 04 JAN 2018