

**PANS-OPS  
INSTRUMENT APPROACH CHART**

**ILS M or LOC M RWY 34  
BANAK (ENNA)**

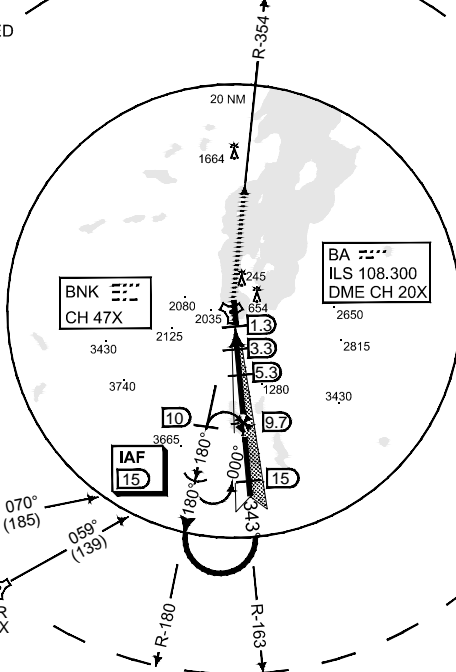
AD ELEV 25

ATIS 136.325		BANAK TWR 118.900 118.050 362.300 257.800					
LOCALIZER/DME BA 108.300/CH 20X	APP COURSE 343°	GS INTCP ALT 3700	GS 3.5°	DA <b>SEE CAT</b>	THR ELEV 25	ALS 737 m	LDA 8543

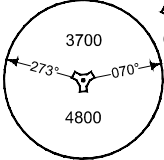
**CAUTION:**  
● CIRCLING NOT AUTHORIZED  
WEST OF RWY 34/16  
DUE TO HIGH TERRAIN

IAF  
69°49.28' N  
024°49.19' E

- NOTE:**  
b) DME REQUIRED
- NOTE:**  
c) DME FROM BNK  
UNLESS OTHERWISE  
INDICATED



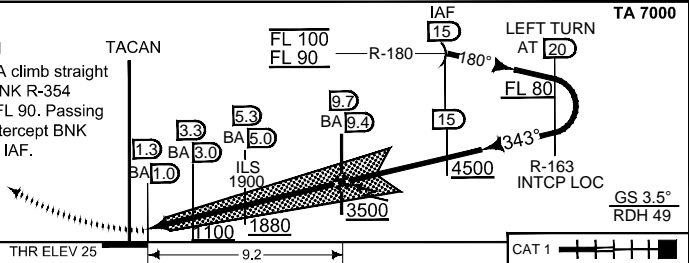
MSA BNK 25 NM



**SAFE ALT 100 NM 6900**

**MISSED APPROACH**

At D 1.3 BNK/D 1.0 BA climb straight ahead and intercept BNK R-354 outbound climbing to FL 90. Passing 4000 ft, turn right to intercept BNK R-180 and continue to IAF.



CHANGES TOTALLY REVISSED

CATEGORY	A	B	C	D	E
S-ILS 34	287 - 0.9 262 (300 - 0.9/1.5)		312 - 0.9 287 (300 - 0.9/1.5)	325 - 0.9 300 (300 - 0.9/1.5)	330 - 0.9 305 (400 - 0.9/1.5)
S-LOC 34	670 - 1.5 645 (700 - 1.5/1.5)		670 - 2.3 645 (700 - 2.3/2.4)		
● CIRCLING	700 - 1.5 675 (700 - 1.5)	970 - 1.6 945 (1000 - 1.6)	1350 - 2.4 1325 (1400 - 2.4)	2210 - 3.6 2185 (2200 - 3.6)	3190 - 3.6 3165 (3200 - 3.6)

**ILS M or LOC M RWY 34**

70°04.00' N  
024°58.44' E

**BANAK (ENNA)**

RNGA/F 04 JAN 2018