

**MIPS INSTRUMENT APPROACH CHART**

**HPMA ILS or LOC RWY 34 BANAK (ENNA)**

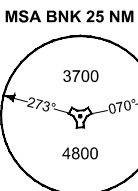
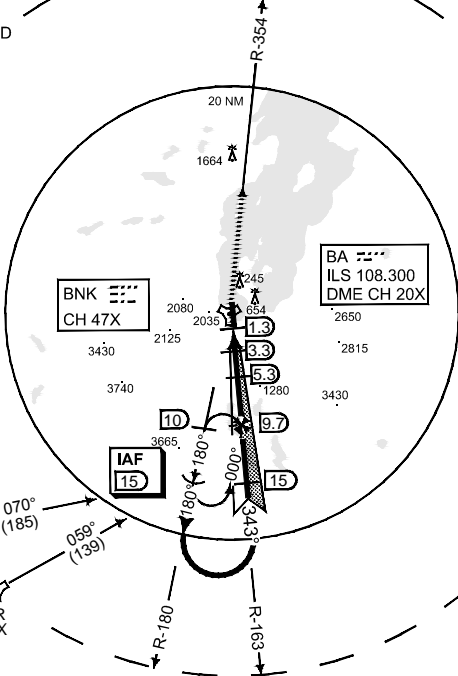
AD ELEV 25

ATIS 136.325		BANAK TWR 118.900 118.050 362.300 257.800					
LOCALIZER/DME BA 108.300/CH 20X	APP COURSE 343°	GS INTCP ALT 3700	GS 3.5°	DA 251	THR ELEV 25	ALS 737 m	LDA 8543

**CAUTION:**  
● CIRCLING NOT AUTHORIZED  
WEST OF RWY 34/16  
DUE TO HIGH TERRAIN

IAF  
69°49.28' N  
024°49.19' E

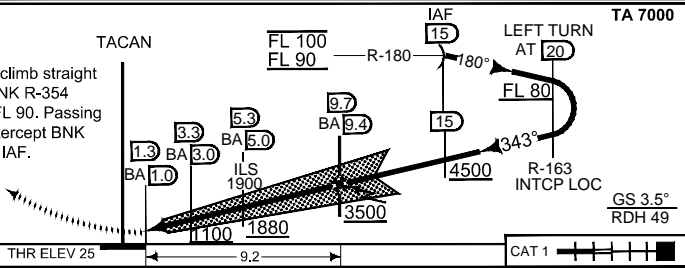
- NOTE:**  
b) DME REQUIRED
- NOTE:**  
c) DME FROM BNK  
UNLESS OTHERWISE  
INDICATED



**SAFE ALT 100 NM 6900**

**MISSED APPROACH**

At D1.3 BNK/D1.0 BA climb straight ahead and intercept BNK R-354 outbound climbing to FL 90. Passing 4000 ft, turn right to intercept BNK R-180 and continue to IAF.



CHANGES TOTALLY REVERSED

CATEGORY	HPMA
S-ILS 34	251 - 0 9 226 (300 - 0 9/1,5)
S-LOC 34	670 - 2.3 645 (700 - 2.3/2,4)
● CIRCLING	1100 - 3.2 1075 (1400 - 3.2)

**HPMA ILS or LOC RWY 34**

70°04.00' N  
024°58.44' E

**BANAK (ENNA)**

RNGAUF 04 JAN 2018