

**PANS-OPS
INSTRUMENT APPROACH CHART**

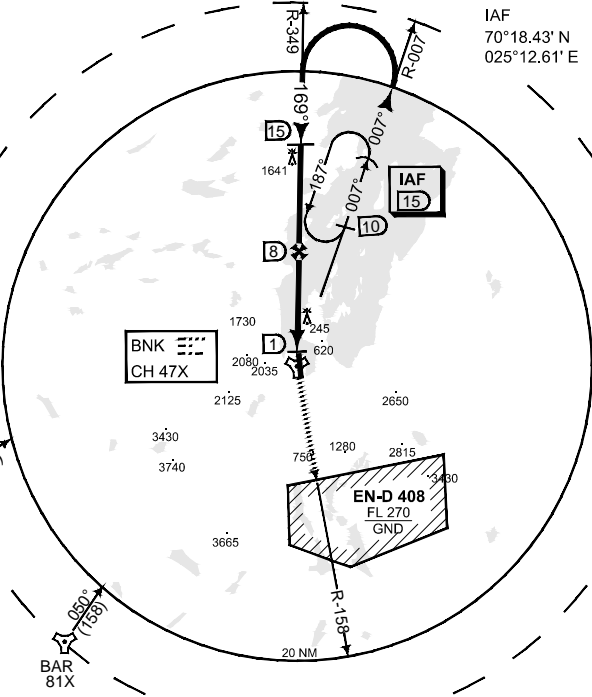
AD ELEV 25

**TACAN RWY 16
BANAK (ENNA)**

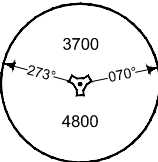
ATIS 136.325		BANAK TWR					
		118.900	118.050	362.300	257.800		
TACAN BNK CH 47X	APP COURSE 169°	FAF ALT 2300	Descent GR 5.2% (3.0°)	MDA 1140	THR ELEV 16	ALS 720 m	LDA 8845

- CAUTION:**
● CIRCLING NOT AUTHORIZED WEST OF RWY 16/34 DUE TO HIGH TERRAIN
- CAUTION:**
b) WINDSHEAR MAY OCCUR ON SHORT FINAL WITH WINDS FROM WEST
- NOTE:**
c) FLUCTUATIONS MAY OCCUR BETWEEN 17 AND 15 ON FINAL

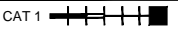
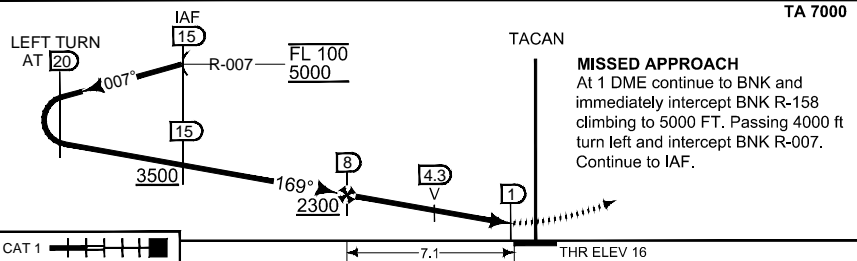
IAF
70°18.43' N
025°12.61' E



MSA BNK 25 NM
OYA 28X
062° (1599)



SAFE ALT 100 NM 6900



TA 7000

CATEGORY	A	B	C	D	E
S-TAC 16	1140 - 1.5 1124 (1200 - 1.5/1.5)		1140 - 2.4 1124 (1200 - 2.4/2.4)		
● CIRCLING	1140 - 1.5 675 (700 - 1.5)	1140 - 1.6 945 (1000 - 1.6)	1350 - 2.4 1325 (1400 - 2.4)	2210 - 3.6 2185 (2200 - 3.6)	3190 - 3.6 3165 (3200 - 3.6)

CHANGES: TOTALLY REVISED

RNOAEP 04 JAN 2018

TACAN RWY 16

70°04.00' N
024°58.44' E

BANAK (ENNA)