

**PANS-OPS  
INSTRUMENT APPROACH CHART**

AD ELEV 25

**LOC M RWY 16  
BANAK (ENNA)**

ATIS 136.325		BANAK TWR 118.900 118.050 362.300 257.800					
LOCALIZER/DME BK 109.350/CH 30Y	APP COURSE 164°	FAF ALT 2000	Descent GR 5.2% (3.0°)	MDA <b>SEE CAT</b>	THR ELEV 16	ALS 720 m	LDA 8845

**CAUTION:**

- CIRCLING NOT AUTHORIZED WEST OF RWY 16/34 DUE TO HIGH TERRAIN

**CAUTION:**

- b) WINDSHEAR MAY OCCUR ON SHORT FINAL WITH WINDS FROM WEST

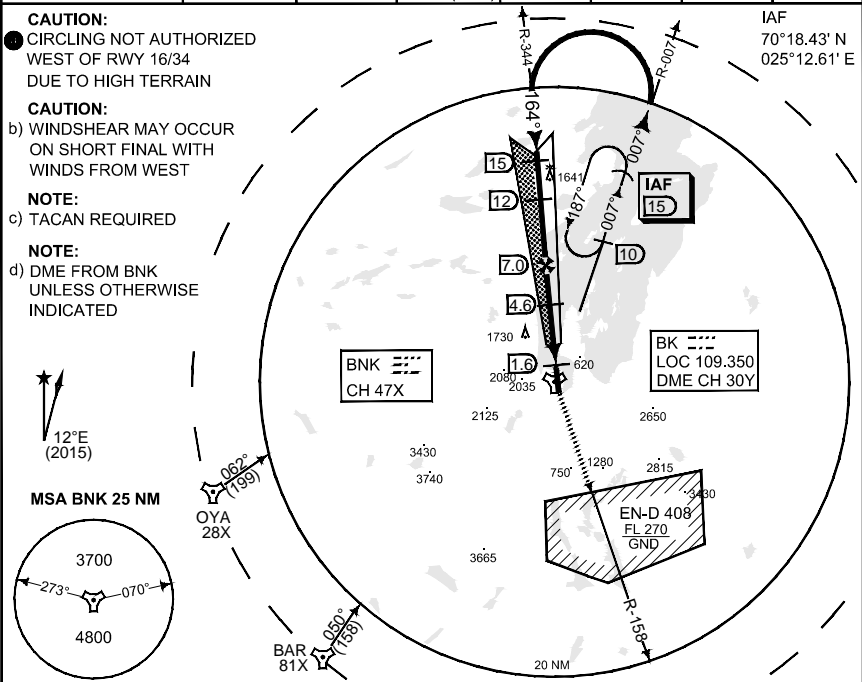
**NOTE:**

- c) TACAN REQUIRED

**NOTE:**

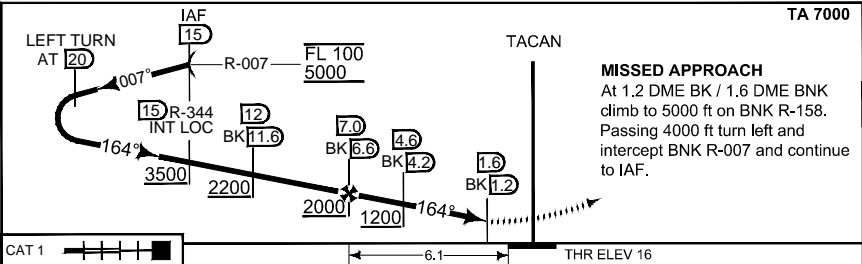
- d) DME FROM BNK UNLESS OTHERWISE INDICATED

IAF  
70°18.43' N  
025°12.61' E



**SAFE ALT 100 NM 6900**

**TA 7000**



**MISSED APPROACH**

At 1.2 DME BK / 1.6 DME BNK climb to 5000 ft on BNK R-158. Passing 4000 ft turn left and intercept BNK R-007 and continue to IAF.

CAT 1	6.1				THR ELEV 16
-------	-----	--	--	--	-------------

CATEGORY	A	B	C	D	E
S-LOC 16 2.5% MA	310 - 0.8 294	(300 - 0.8/1.4)	320 - 0.8 304 (400 - 0.8/1.4)	330 - 0.8 314 (400 - 0.8/1.4)	370 - 0.9 354 (400 - 0.9/1.6)
S-LOC 16 3.0% MA	310 - 0.8 294	(300 - 0.8/1.4)	320 - 0.8 304 (400 - 0.8/1.4)	330 - 0.8 314 (400 - 0.8/1.4)	340 - 0.8 324 (400 - 0.8/1.5)
● CIRCLING	700 - 1.5 675 (700 - 1.5)	970 - 1.6 945 (1000 - 1.6)	1350 - 2.4 1325 (1400 - 2.4)	2210 - 3.6 2185 (2200 - 3.6)	3190 - 3.6 3165 (3200 - 3.6)

CHANGES: TOTALLY REVISED

RNGAUF 04 JAN 2018

**LOC M RWY 16**

70°04.00' N  
024°58.44' E

**BANAK (ENNA)**