

**PANS-OPS
INSTRUMENT DEPARTURE CHART**

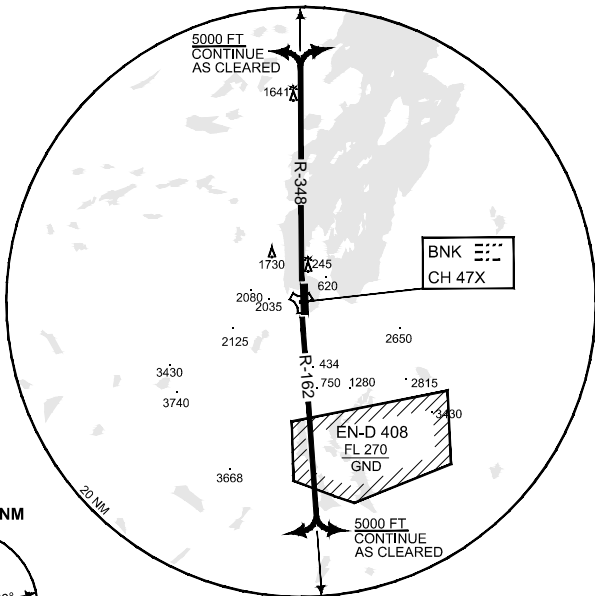
**TACAN SID RWY 16/34
BANAK (ENNA)**

AD ELEV 26

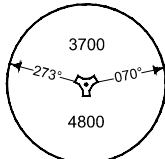
| | | | | | | | | | | | |
|-----------------|--|-----------|--------------------|-----------|---------------------------|------------|-------------|-------------|-------------|---------------|-------------------|
| ATIS 136.325 | BANAK TWR 118.900 118.050 362.300 257.800 | | | | NORWAY CONTROL 126.700 | | | | | | |
| AD ELEV 26 | | RWY 16 | Knots V/V (fpm) | 60 270 | 120 530 | 180 800 | 240 1070 | 300 1330 | 360 1600 | to 1400 ft | Reason TERRAIN |

NOTE:

- a) FLUCTUATIONS MAY OCCUR BETWEEN 13 AND 17 ON R-348



MSA BNK 25 NM



SAFE ALT 100 NM 6900

TA 7000

| | |
|------------------|--|
| TACAN SID RWY 16 | <ul style="list-style-type: none"> - Minimum 4.5% climb gradient / 2.6° climb angle to 1400 ft (terrain). - Climb to 7000 ft or higher as cleared by ATC. - Climb on BNK R-162. Reaching 5000 ft, continue as cleared. - Obstacles (164 ft MSL) 0.3 NM after DER must be avoided visually. |
| TACAN SID RWY 34 | <ul style="list-style-type: none"> - Climb to 7000 ft or higher as cleared by ATC. - Climb on BNK R-348. Reaching 5000 ft, continue as cleared. |

CHANGES: TOTALLY REVISED

RNOAF 04 JAN 2018

TACAN SID RWY 16/34

70°04.00' N
024°58.44' E

BANAK (ENNA)