

MIPS INSTRUMENT APPROACH CHART

HPMA ILS or LOC RWY 19R GARDERMOEN (ENGM)

AD ELEV 681

ATIS 126.125	GARDERMOEN APP 120.450 W	DIRECTOR 118.475 E	FINAL 136.400	GARDERMOEN TWR 118.300	GROUND 257.800	21.605	337.975
LOCALIZER/DME GSW 111.300 CH 50X	APP COURSE 193°	GS INTCP ALT 3500	GS 3.0°	DA 875	THR ELEV 675	ALS 900 m	LDA 11811

CAUTION:

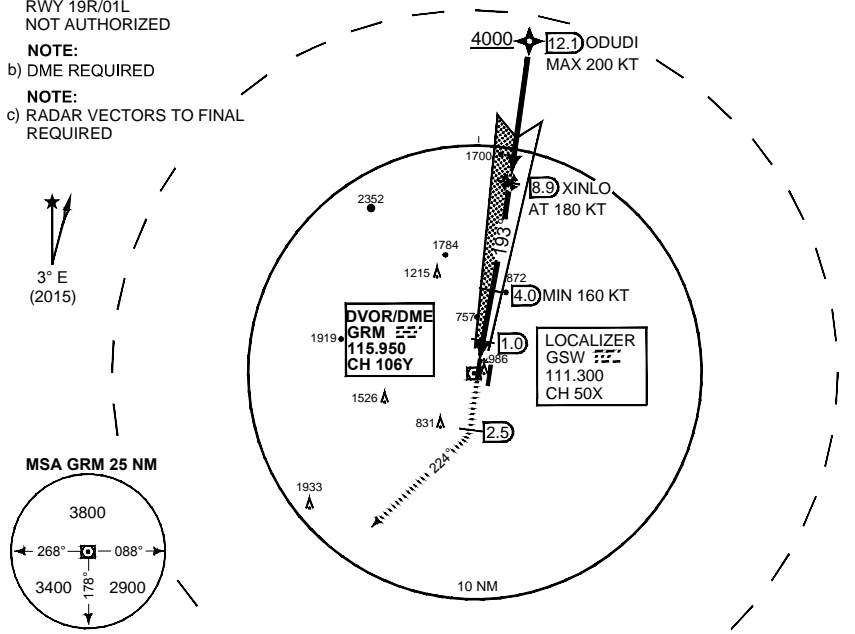
- CIRCLING EAST OF RWY 19R/01L NOT AUTHORIZED

NOTE:

- b) DME REQUIRED

NOTE:

- c) RADAR VECTORS TO FINAL REQUIRED

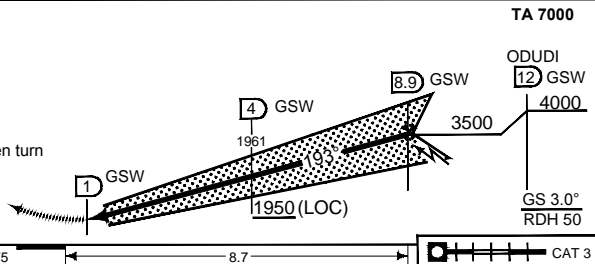


SAFE ALT 100NM 9700

MISSED APPROACH

Climb on RWY track 193° to DME 2.5 after GSW. Turn right to track 224° climbing to 5000 ft. Expect vectoring by OSLO APP.

NOTE: In case of RCF, continue on HDG 225° to 20 DME GSW, then turn right DCT GRM for new approach.



TA 7000

THR ELEV 675

8.7

CAT 3

CATEGORY	HPMA
S-ILS 19R	875 -800 200 (200-0.8/1.2)
S-LOC 19R	1020 -1200 345 (400-1.2/2.0)
● CIRCLING	2040 -3.2 1359 (1400-3.2)

HPMA ILS or LOC RWY 19R

60°12.16' N
011°05.03' E

GARDERMOEN (ENGM)

CHANGES: GND FRQ

RNAIF 21 JUN 2018