

**MIPS INSTRUMENT APPROACH CHART**

AD ELEV 681

**HPMA ILS or LOC RWY 19L GARDERMOEN (ENGM)**

ATIS 126.125	GARDERMOEN APP 118.475 E 120.450 W	DIRECTOR 136.400	FINAL 128.900	GARDERMOEN TWR 120.100 257.800	GROUND 121.905 337.975		
LOCALIZER/DME GME 110.550 CH 42Y	APP COURSE 193°	GS INTCP ALT 3500	GS 3.0°	DA 881	THR ELEV 681	ALS 900 m	LDA 9678

**CAUTION:**

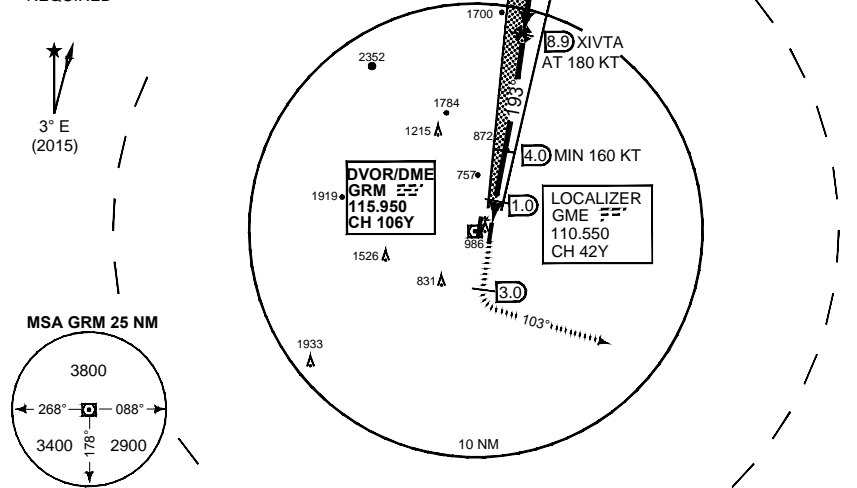
- 1 CIRCLING WEST OF RWY 19R/01L NOT AUTHORIZED

**NOTE:**

- b) DME REQUIRED

**NOTE:**

- c) RADAR VECTORS TO FINAL REQUIRED

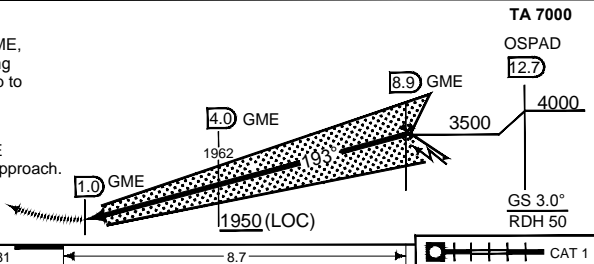


**SAFE ALT 100NM 9700**

**MISSED APPROACH**

Climb on RWY track 193° to 3.0 DME, then turn left and track 103° climbing to 3000 ft. At 13.0 DME GME, climb to 5000 ft and expect vectors.

NOTE: In case of RCF, continue on track 103° to 5000 ft. At 20 DME GME, turn left DCT GRM for new approach.



TA 7000

OSPAD

12.7

4000

3500

GME

1962

GME

GS 3.0°

RDH 50

THR ELEV 681

8.7

CAT 1

CATEGORY	HPMA
S-ILS 19L	881 - 800 200 (200-0.8/1.2)
S-LOC 19L	1030 - 1200 349 (400-1.2/1.6)
1 CIRCLING	1570 - 3.2 889 (900-3.2)

**HPMA ILS or LOC RWY 19L**

60°12.16' N  
011°05.03' E

**GARDERMOEN (ENGM)**

CHANGES: GND FRQ

RNAV 21 JUN 2018