

**MIPS
INSTRUMENT APPROACH CHART**

AD ELEV 681

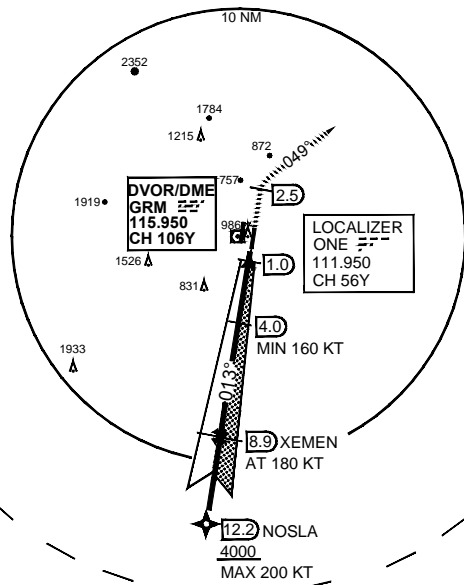
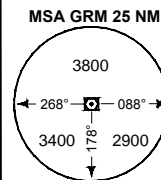
**HPMA ILS or LOC RWY 01R
GARDERMOEN (ENGM)**

ATIS 126.125	GARDERMOEN APP 118.475 E	DIRECTOR 120.450 W	FINAL 136.400	GARDERMOEN TWR 120.100	GROUND 257.800	ALS 121.905	LDA 337.975
LOCALIZER/DME ONE 111.950 CH 56Y	APP COURSE 013°	GS INTCP ALT 3500	GS 3.0°	DA 870	THR ELEV 670		

CAUTION:
● CIRCLING WEST OF
RWY 01R/19L
NOT AUTHORIZED

NOTE:
b) DME REQUIRED

NOTE:
c) RADAR VECTORS TO FINAL
REQUIRED

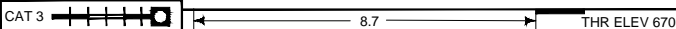
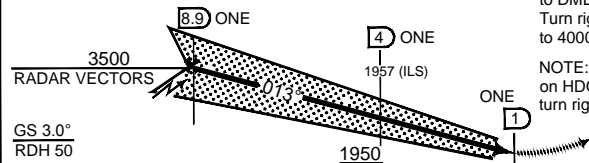


SAFE ALT 100NM 9700

MISSED APPROACH

TA 7000

At 1 DME climb on RWY track 013° to DME 2.5 after ONE.
Turn right and proceed on HDG 049° to 4000 ft. Expect vectoring by OSLO APP.
NOTE: In case of RCF: Climb to 4000 ft on HDG 049°. After passing 20 DME ONE, turn right DCT GRM for new approach.



HPMA			
CATEGORY			
S-ILS 01R	870	-800	200 (200-0.8/1.2)
S-LOC 01R	970	-1200	300 (300-1.2/1.6)
● CIRCLING	1570	-3.2	889 (900-3.2)

HPMA ILS or LOC RWY 01R

60°12.16' N
011°05.03' E

GARDERMOEN (ENGM)

CHANGES: GND FRQ
MIPS

ENGM/AF 21 JUN 2018