

**PANS-OPS  
INSTRUMENT APPROACH CHART**

AD ELEV 85

**TACAN A  
EVENES (ENEV)**

ATIS 126.025	EVENES APPROACH 120.100	EVENES TOWER 120.100 118.000 369.325 308.775 257.800			
TACAN EVS CH 67X	APP COURSE 006°	FAF ALT 4300	MDA -		

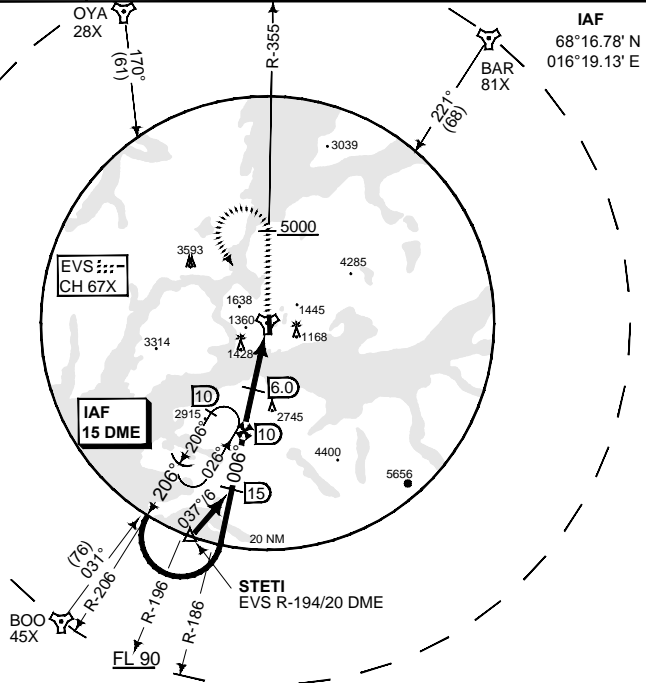
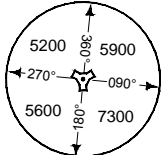
**CAUTION:**  
● CIRCLING NOT AUTHORIZED EAST OF RWY

**CAUTION:**  
DO NOT USE PAPI RWY 35 OUTSIDE 5 NM

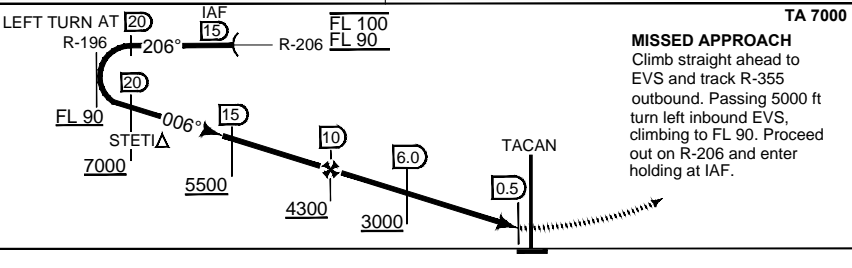
**NOTE:**  
ATC MAY APPROVE APPROACH FROM STETI

6.4°E  
(2015)

**MSA EVS 25 NM**



**SAFE ALT 100NM 9300**



CATEGORY	A	B	C	D
● CIRCLING	1130 - 1.9 1045 (1100 - 1.9)	1690 - 2.8 1605 (1700 - 2.8)	2090 - 3.7 2005 (2100 - 3.7)	2130 - 4.6 2045 (2100 - 4.6)

CHANGES: EDITORIAL  
MIPS

RND/AF 21 JUN 2018

**TACAN A**

68°29.33N  
016°40.70E

**EVENES(ENEV)**