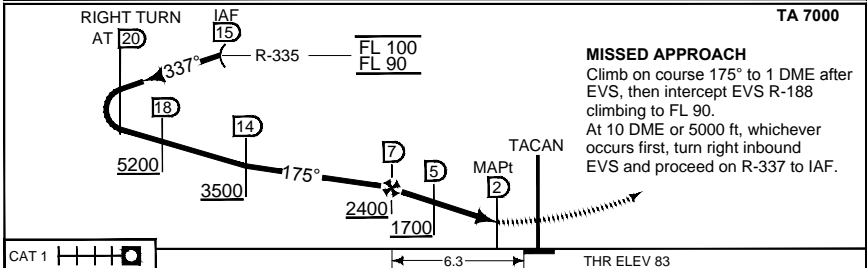
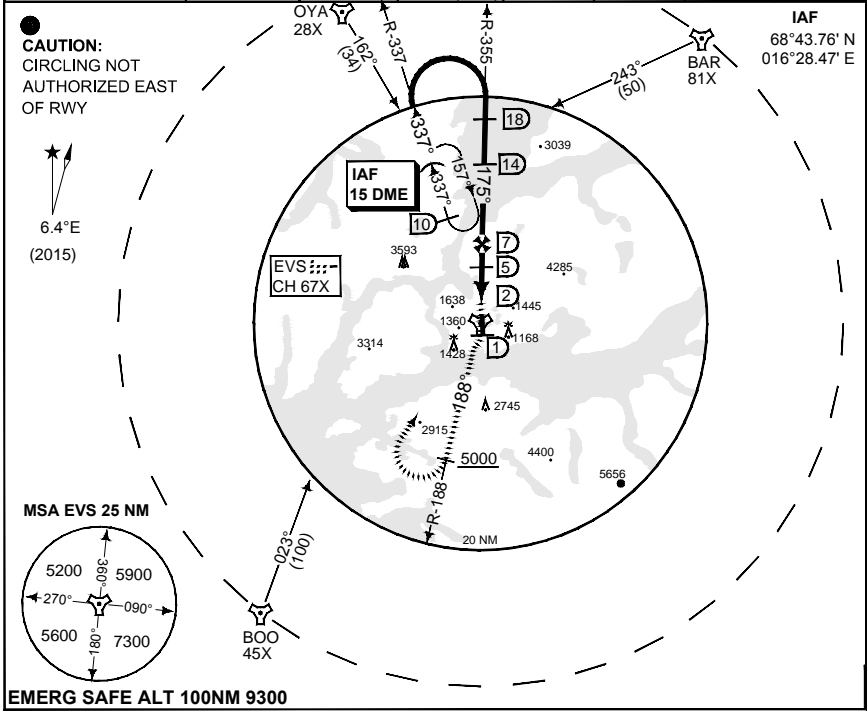


**PANS-OPS
INSTRUMENT APPROACH CHART**

AD ELEV 85

**TACAN RWY 17
EVENES (ENEV)**

ATIS 126.025	EVENES APPROACH 120.100		120.100	118.000	EVENES TOWER 369.325 308.775 257.800		
TACAN EVS CH 67X	APP COURSE 175°	FAF ALT 2400	Descent GR 5.9% (3.4°)	MDA -	THR ELEV 83	ALS 720 m	LDA 8917



CATEGORY	A	B	C	D
S-TAC 17 2.5% MA CLMB	1450 - 5.0 1367 (1400 - 5.0/5.0)	1480 - 5.0 1397 (1400 - 5.0/5.0)	1510 - 5.0 1427 (1500 - 5.0/5.0)	1520 - 5.0 1437 (1300 - 4.0/4.8)
S-TAC 17 4.0% MA CLMB	1010 - 1600 927 (1000 - 1.6/2.4)	1010 - 1600 927 (1000 - 1.6/2.4)	1010 - 3.6 927 (1000 - 3.6/4.4)	1010 - 4.0 927 (1000 - 4.0/4.8)
● CIRCLING	1440 - 5.0 1355 (1400 - 5.0)	1690 - 5.0 1505 (1600 - 5.0)	2090 - 5.0 2005 (2100 - 5.0)	2130 - 5.0 2035 (2100 - 5.0)

TACAN RWY 17

68°29.33N
016°40.70E

EVENES(ENEV)

CHANGES: LDA, MVAR

RNO/AF 21 JUN 2018