

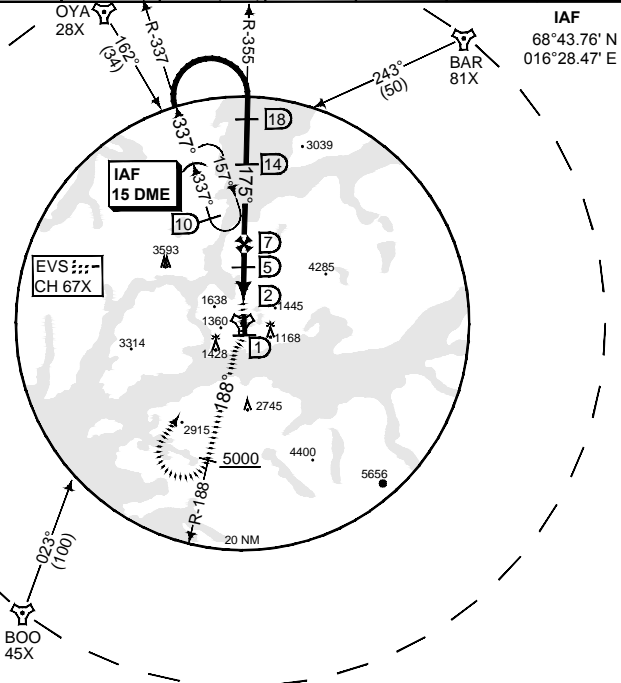
MIPS INSTRUMENT APPROACH CHART

AD ELEV 85

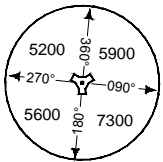
**HPMA TACAN RWY 17
EVENES (ENEV)**

ATIS 126.025	EVENES APPROACH 120.100		120.100	118.000	EVENES TOWER 369.325 308.775 257.800		
TACAN EVS CH 67X	APP COURSE 175°	FAF ALT 2400	Descent GR 5.9% (3.4°)	MDA 1010	THR ELEV 83	ALS 720 m	LDA 8917

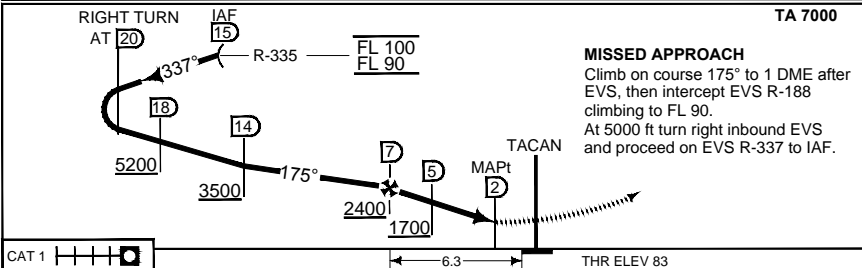
CAUTION:
CIRCLING NOT
AUTHORIZED EAST
OF RWY



MSA EVS 25 NM



EMERG SAFE ALT 100NM 9300



CAT 1	6.3	THR ELEV 83
-------	-----	-------------

CATEGORY	HPMA
S-TAC 17	1010 - 4.0 927 (1000 - 4.0/4.8)
CIRCLING	1990 - 3.2 1905 (2000 - 3.2)

CHANGES: LDA, MVAR

RNO/AF 21 JUN 2018

HPMA TACAN RWY 17

68°29.33N
016°40.70E

EVENES(ENEV)