

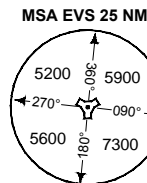
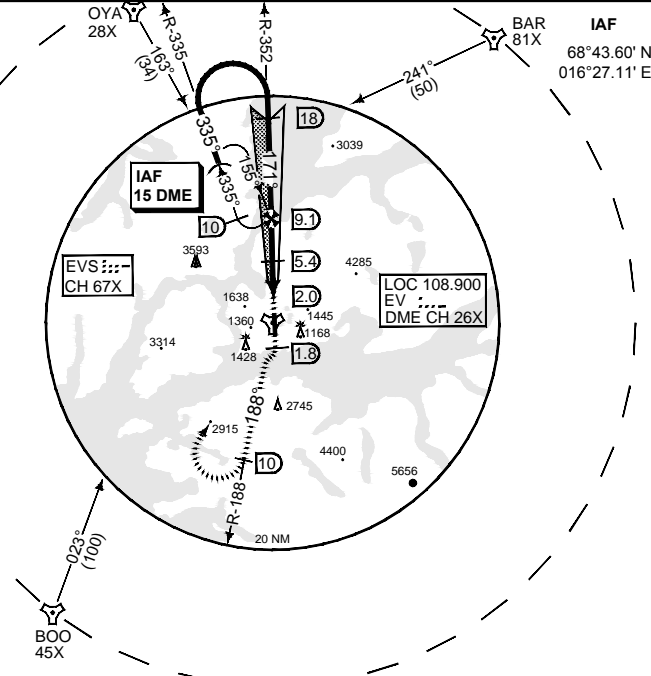
**PANS-OPS
INSTRUMENT APPROACH CHART**

AD ELEV 85

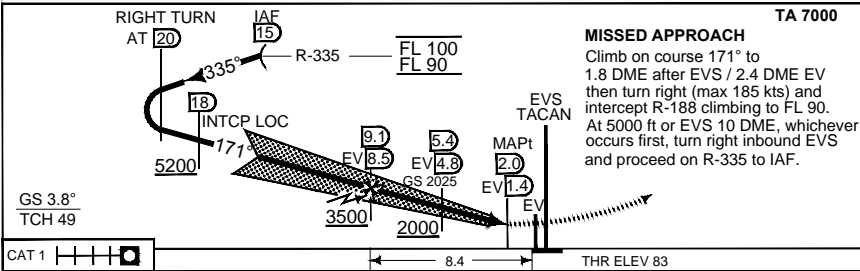
**ILS M or LOC M RWY 17
EVENES(ENEV)**

ATIS 126.025	EVENES APPROACH 120.100	120.100	118.000	EVENES TOWER 369.325 308.775 257.800			
LOCALIZER/DME EV 108.900/CH 26X	APP COURSE 171°	GS INTCP ALT 3500	GS 3.8°	DA -	THR ELEV 83	ALS 720 m	LDA 8917

- CAUTION:**
- CIRCLING NOT AUTHORIZED EAST OF RWY
- NOTE:**
- b) DME REQUIRED
 - c) DME FROM EVS UNLESS OTHERWISE INDICATED
 - d) PAPI 3.4°



EMERG SAFE ALT 100NM 9300



MISSED APPROACH
Climb on course 171° to 1.8 DME after EVS / 2.4 DME EV then turn right (max 185 kts) and intercept R-188 climbing to FL 90. At 5000 ft or EVS 10 DME, whichever occurs first, turn right inbound EVS and proceed on R-335 to IAF.

CATEGORY	TA 7000			
	A	B	C	D
S-ILS 17 2.5% MA CLMB	1325 - 5.0 1242 (1300 - 5.0/5.0)	1343 - 5.0 1260 (1300 - 5.0/5.0)	1355 - 5.0 1272 (1300 - 5.0/5.0)	1371 - 5.0 1288 (1300 - 5.0/5.0)
S-ILS 17 5.0% MA CLMB	352 - 800 269 (300 - 0.8/1.6)	371 - 800 288 (300 - 0.8/1.6)	383 - 800 300 (300 - 0.8/1.6)	398 - 800 315 (400 - 0.8/1.6)
S-LOC 17 2.5% MA CLMB	1450 - 5.0 1367 (1400 - 5.0/5.0)	1480 - 5.0 1397 (1400 - 5.0/5.0)	1510 - 5.0 1427 (1500 - 5.0/5.0)	1520 - 5.0 1437 (1500 - 5.0/5.0)
● CIRCLING	1440 - 5.0 1357 (1400 - 5.0)	1690 - 5.0 1605 (1600 - 5.0)	2090 - 5.0 2005 (2100 - 5.0)	2130 - 5.0 2035 (2100 - 5.0)

CHANGES: MVAR, LDA, RND/AF 21 JUN 2018

ILS M or LOC M RWY 17

68°29.33N
016°40.70E

EVENES(ENEV)