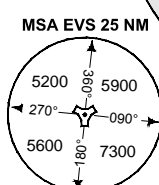
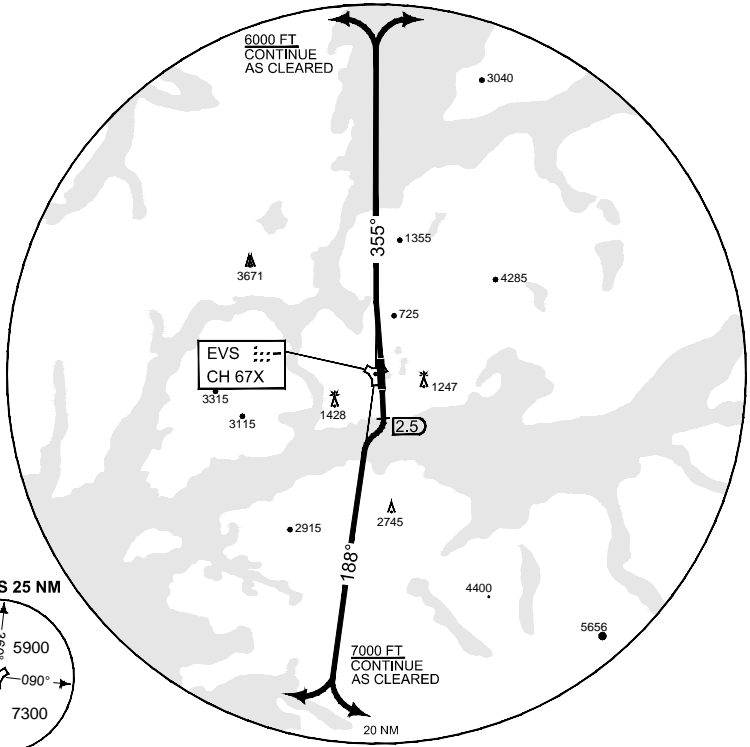


**PANS-OPS  
INSTRUMENT DEPARTURE CHART**

**SID RWY 17/35  
EVENES (ENEV)**

ATIS 126.025	EVENES TWR 118.000 120.100 369.325			EVENES APP 120.100				NORWAY CONTROL 126.450 278.050		
	AD ELEV <b>85</b>	RWY <b>17</b>	Knots V/V (fpm)	60 420	120 830	180 1240	240 1660	300 2070	360 -	reason <b>3500</b>
		<b>35</b>	V/V (fpm)	320	640	950	1270	1580	-	<b>1000 terrain</b>
			V/V (fpm)	230	450	680	900	1130	-	<b>1800</b>



**EMERG SAFE ALT 100 NM 9300** **TA 7000**

RWY 17	<ul style="list-style-type: none"> <li>- Climb to FL 90.</li> <li>- Minimum climb gradient 6.8% (3.9°) to 3500 ft.</li> <li>- Climb straight ahead to D 2.5 EVS, then turn right to intercept EVS R-188. Climb to 7000 ft before turning according to ATC clearance.</li> </ul>
RWY 35	<ul style="list-style-type: none"> <li>- Climb to FL 90.</li> <li>- Minimum climb gradient 5.2% (3.0°) to 1000 ft, then 3.7% (2.2°) to 1800 ft.</li> <li>- Climb straight ahead and intercept EVS R-355 outbound. Climb to 6000 ft before turning according to ATC clearance.</li> </ul>

CHANGES: MVAR

RNOAF-21 JUN 2018

**SID RWY 17/35**

68°29.33' N  
016°40.70' E

**EVENES (ENEV)**