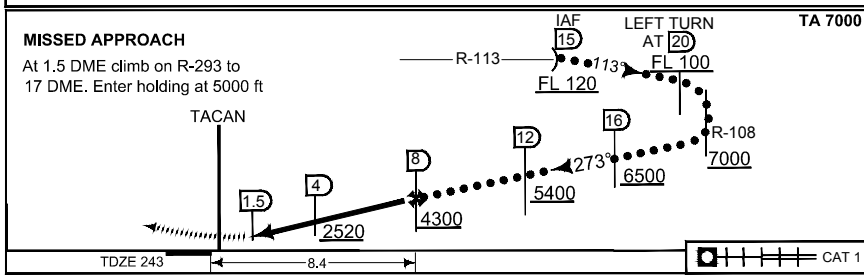
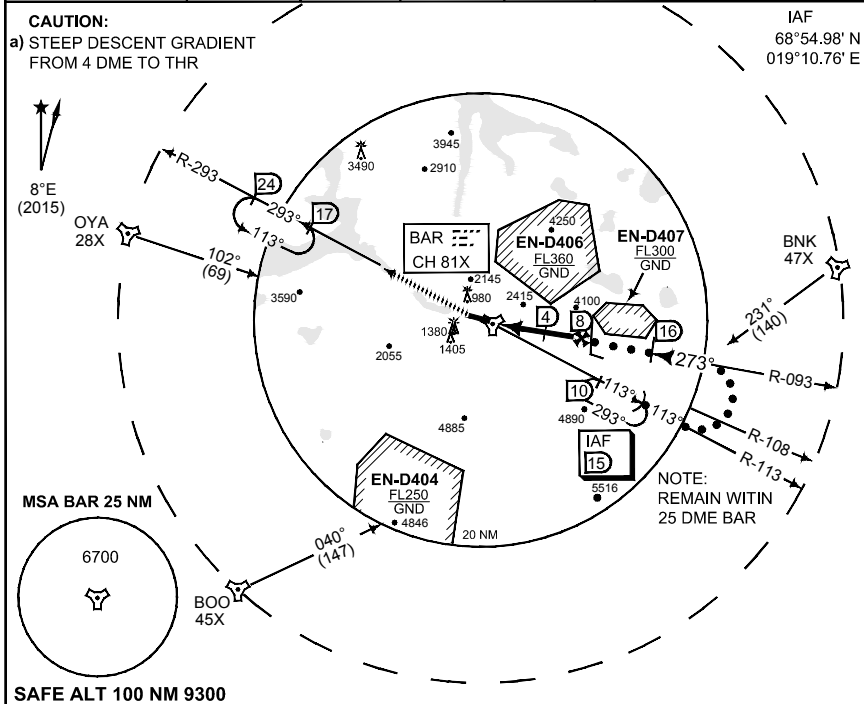


**TERPS
INSTRUMENT APPROACH CHART**

AD ELEV 252

**HI-TACAN RWY 28
BARDUFOSS (ENDU)**

ATIS 129.725	BARDUFOSS APP 118.800 125.850 275.300 397.375X			BARDUFOSS TWR 118.100 122.100 280.700 257.800X			
TACAN BAR CH 81X	APP COURSE 273°	FAF ALT 4300	Descent GR 508 FT/NM	MDA 1160	TDZE 243	ALS 1340 m	LDA 8018



CATEGORY	C	D	E
S-TAC 28	1160 - 4.0 917 (1000 - 4.0)		
CIRCLING	1720 - 4.8 1468 (1500 - 4.8)	2860 - 4.8 2608 (2700 - 4.8)	

HI-TACAN RWY 28

69°03.35' N
018°32.42' E

BARDUFOSS (ENDU)

CHANGES: LDA
MIPS

RND/AF 09 NOV 2017