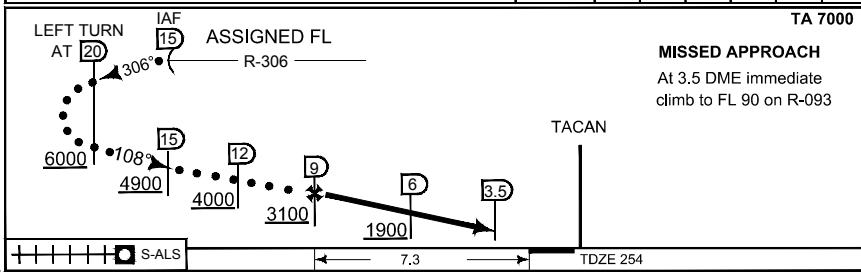
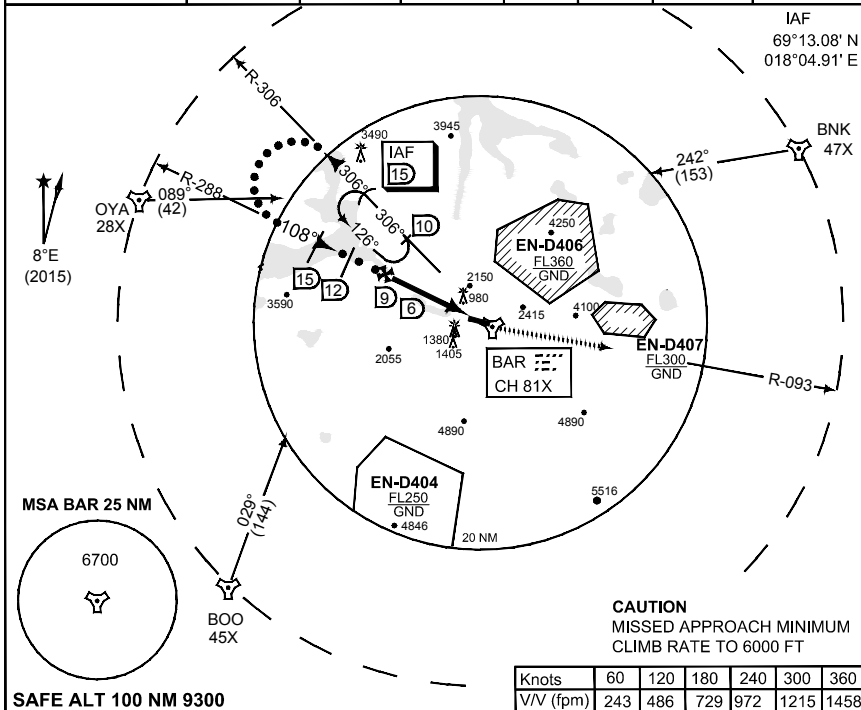


**TERPS
INSTRUMENT APPROACH CHART**

AD ELEV 252

**HI-TACAN RWY 10
BARDUFOSS (ENDU)**

ATIS 129.725	BARDUFOSS APP 118.800 125.850 275.300 397.375X			BARDUFOSS TWR 118.100 122.100 280.700 257.800X			
TACAN BAR CH 81X	APP COURSE 108°	FAF ALT 3100	Descent GR 398 FT/NM	MDA 1420	TDZE 254	ALS 2840 m	LDA 6564



CATEGORY	C	D	E
S-TAC 10	1420 - 4.4 1166 (1200 - 4.4)		
CIRCLING	1720 - 4.8 1466 (1500 - 4.8)	2860 - 4.8 2606 (2700 - 4.8)	

HI-TACAN RWY 10

69°03.35' N
018°32.42' E

BARDUFOSS (ENDU)

CHANGES LDA, ALS, TDZE

RNGAUF 09 NOV 2017