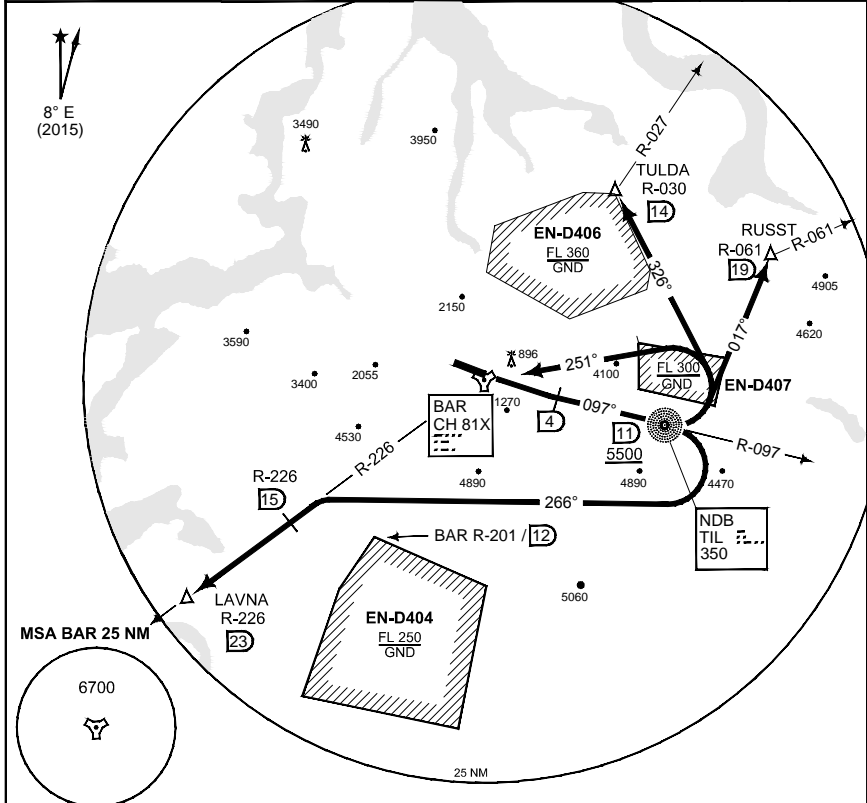


**TERPS  
INSTRUMENT DEPARTURE CHART**

AD ELEV 252

**SID RWY 10  
BARDUFOSS (ENDU)**

ATIS 129.725	BARDUFOSS TWR 118.100 122.100 280.700 257.800X				BARDUFOSS APP 118.800 125.850 275.300 397.375X						
BODO CONTROL 126.450 278.050		RWY 10	Knots V/V (fpm)	60 527	120 1054	180 1581	240 2108	300 2635	360 3162	to 7000	reason TERRAIN



**RWY 10 INITIAL CLIMB** **TA 7000**  
 Climb on 101° to 4 DME BAR. Continue outbound on BAR R-097 to 11 DME (TIL NDB).  
 Minimum altitude at 11 DME is 5500 ft. Then:

<b>TACAN BARDUFOSS:</b>	Left turn inbound BAR. Climb to minimum 7000 ft.
<b>TACAN LAVNA A:</b>	Turn right 266° - intercept BAR R-226 no later than 15 Nm. Follow R-226 to LAVNA. Climb to minimum 7000 ft. Avoid D-404 (BAR R-201 12 DME).
<b>TACAN RUSST:</b>	Turn left 017° to RUSST. Climb to minimum 9000 ft.
<b>TACAN TULDA A:</b>	Turn left 326° to TULDA. Climb to minimum 7000 ft.
<b>● VISUAL LEFT TURN:</b>	If unable to comply with climb gradients, a left visual turn from abeam hazard beacon (840 ft MSL) to 266° to intercept and follow SIDs RWY 28 may be requested.
<b>● WARNING: SEE-AND-AVOID MANOEUVRE</b>	<b>stay VMC until established on SID 28.</b>

CHANGES: WARNING TEXT

FRNDAF 18 AUG 2016

**SID RWY 10**

69°03.35' N  
018°32.42' E

**BARDUFOSS (ENDU)**