

**TERPS INSTRUMENT APPROACH CHART**

**ILS M or LOC M RWY 03  
KJEVIK (ENCN)**

AD ELEV 57

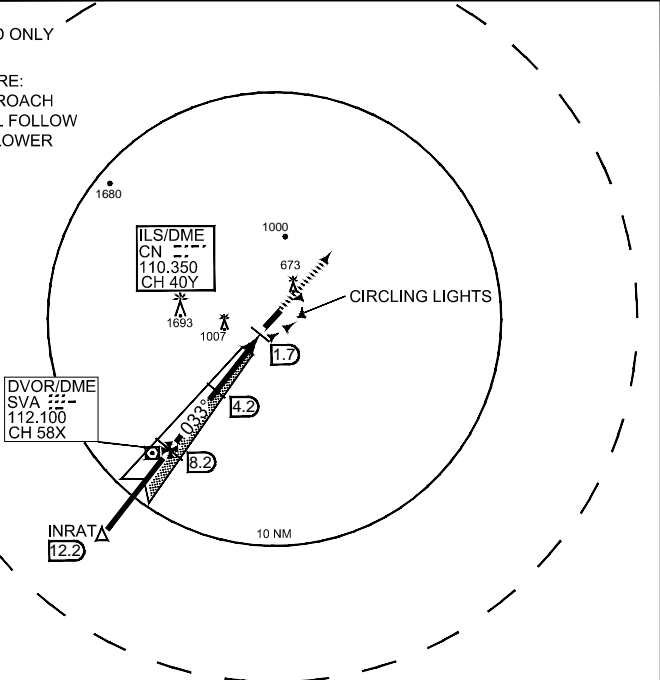
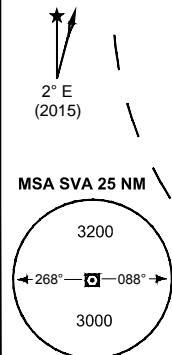
ATIS 124.475		KJEVIK APP 119.950			KJEVIK TWR 119.950 118.100		
ILS/DME CN 110.350/CH 40Y	APP COURSE 033°	GS INTCP ALT 3000	GS 3.4°	DA 460	TDZE 46	ALS 900 m	LDA 6332

**CAUTION:**  
● CIRCLING EAST OF AD ONLY

**NOTE:**  
b) NOISE ABT PROCEDURE:  
ACFT ON VISUAL APPROACH  
BELOW 1500 FT SHALL FOLLOW  
DESCENT PATH NOT LOWER  
THAN ILS/PAPI GS.

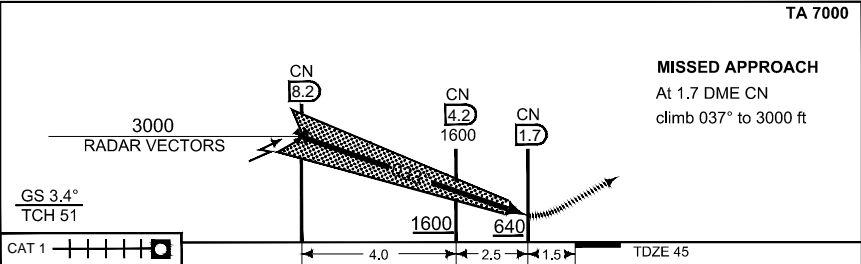
**NOTE:**  
c) DME REQUIRED

**NOTE:**  
d) RADAR VECTORS  
TO FINAL REQUIRED



**SAFE ALT 100 NM 7300 FROM LST**

TA 7000



CATEGORY	C	D	E
S-ILS 04	460 - 1.2 415 (500 - 1.2/2.0)		460 - 1.6 415 (500 - 1.6/2.4)
S-LOC 04	640 - 1.6 595 (600 - 1.6/2.4)	640 - 2.0 595 (600 - 2.0/2.8)	640 - 2.4 595 (600 - 2.4/3.2)
● CIRCLING	1020 - 4.8 963 (1000 - 4.8)		

**ILS M or LOC M RWY 03**

58°12.24N  
008°05.10E

**KJEVIK (ENCN)**

CHANGES: RWY ID

RNGAF 25 MAY 2017