

TERPS INSTRUMENT APPROACH CHART

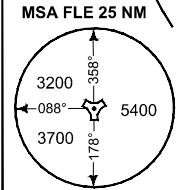
AD ELEV 166

HI-TACAN RWY 35 FLESLAND (ENBR)

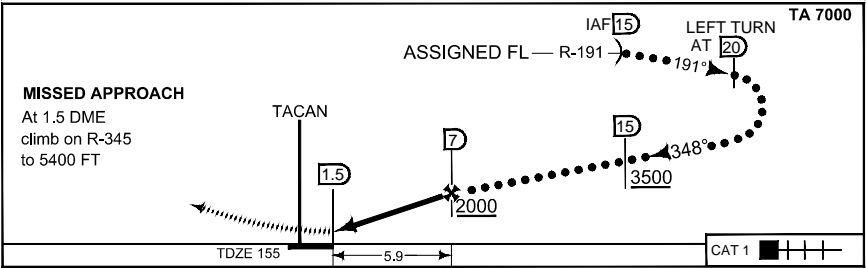
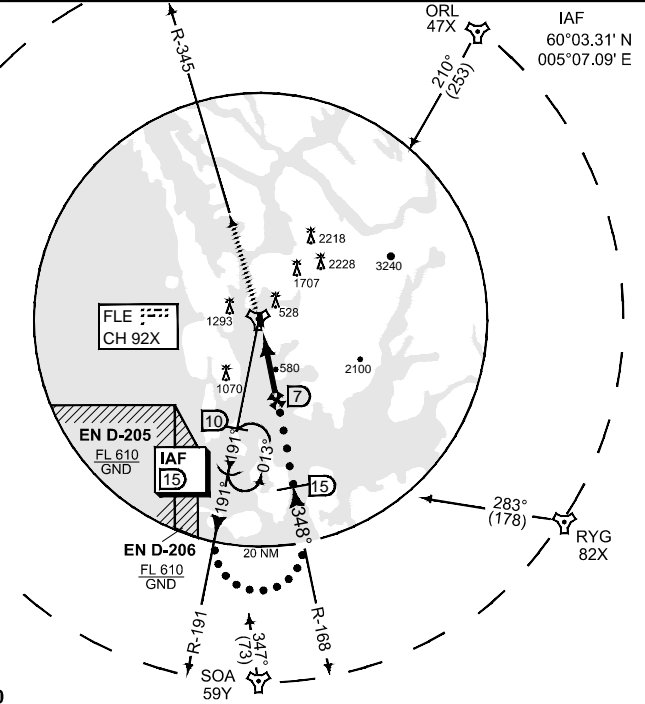
ATIS 125.250	FLESLAND APP 121.000 W 125.000 E	FLESLAND DIRECTOR 118.850	FLESLAND TWR 119.100 122.100	GND 121.900			
TACAN FLE CH 92X	APP COURSE 348°	FAF ALT 2000	Descent GR 312 FT/NM	MDA 820	TDZE 155	ALS 450 m	LDA 8284

CAUTION:
● CAT E CIRCLING NOT AUTHORIZED EAST OF RWY 35/17

0°E (2015)



SAFE ALT 100 NM 8600



CATEGORY	C		D		E	
	S-TAC 35	820	- 2.4 665 (700 - 2.4)	820	- 3.2 665 (700 - 3.2)	
● CIRCLING	840	- 674 (700 - 3.2)	860	- 694 (700 - 3.6)	1600	- 1434 (1500 - 4.8)

CHANGES EDITORIAL

HI-TACAN RWY 35

60°17.61' N
005°13.09' E

FLESLAND (ENBR)

RNGA# 26 APR 2018