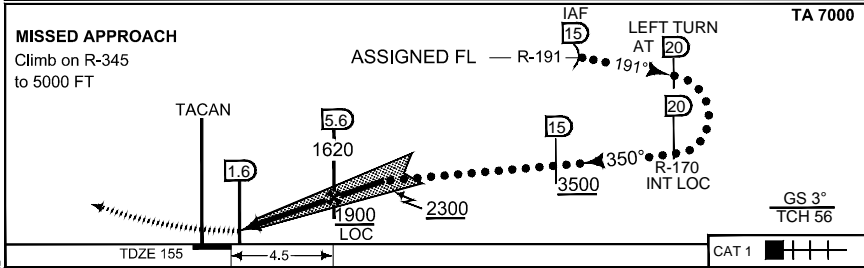
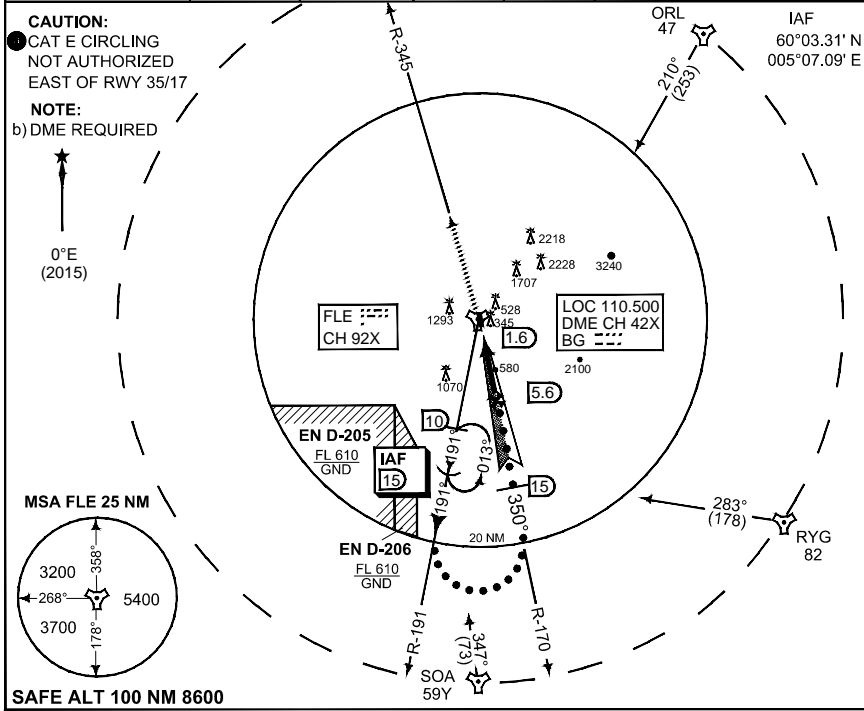


TERPS INSTRUMENT APPROACH CHART

AD ELEV 166

HI-ILS or LOC RWY 35 FLESLAND (ENBR)

ATIS 125.250	FLESLAND APP 121.000 W 125.000 E	FLESLAND DIRECTOR 118.850	FLESLAND TWR 119.100 122.100	GND 121.900			
LOCALIZER/ TACAN DME BG 110.500/CH 92X	APP COURSE 350°	GS INTCP ALT 2300	GS 3.0°	DA 353	TDZE 155	ALS 450 m	LDA 8284



CATEGORY	C	D	E
S-ILS 35		355 - 1.2 200 (200 - 1.2)	
S-LOC 35		460 - 1.2 305 (400 - 1.2)	
● CIRCLING	840 - 3.2 674 (700 - 3.2)	860 - 3.6 694 (700 - 3.6)	1600 - 4.8 1434 (1500 - 4.8)

HI-ILS or LOC RWY 35

60°17.61' N
005°13.09' E

FLESLAND (ENBR)

CHANGES: ATC FRQ ADDED

MIPS

RNOAF 14 SEP 2017