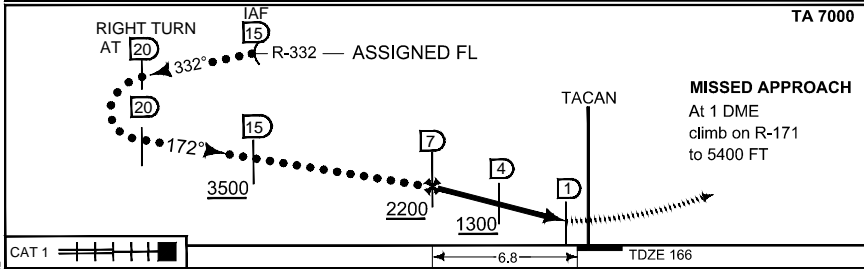
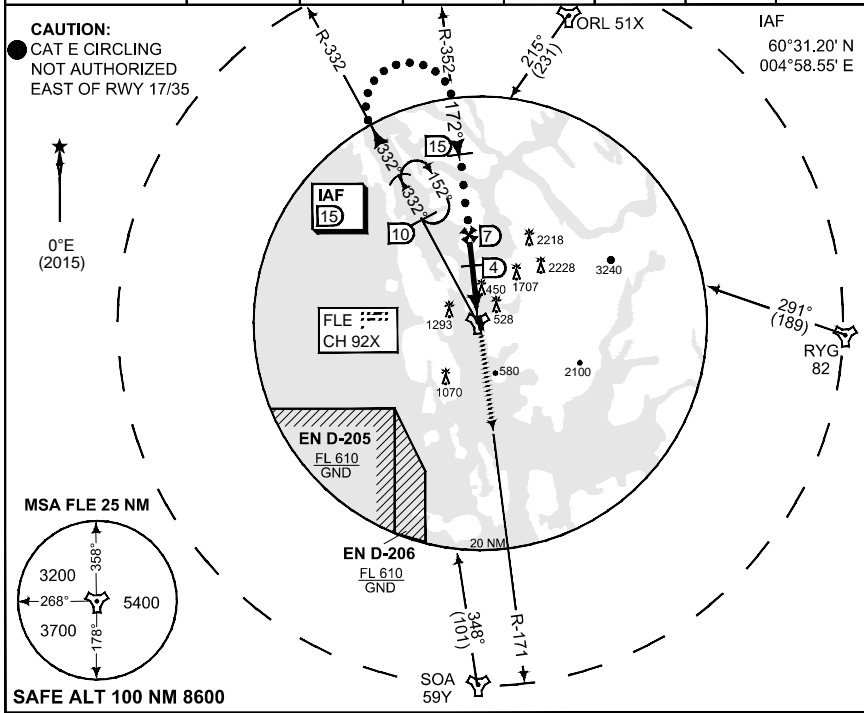


TERPS INSTRUMENT APPROACH CHART

AD ELEV 166

HI-TACAN RWY 17 FLESLAND (ENBR)

ATIS 125.250	FLESLAND APP 121.000 W 125.000 E	FLESLAND DIRECTOR 118.850	FLESLAND TWR 119.100 122.100	GND 121.900			
TACAN FLE CH 92X	APP COURSE 172°	FAF ALT 2200	Descent GR 302 FT/NM	MDA 700	TDZE 166	ALS 900 m	LDA 8366



CATEGORY	C	D	E
S-TAC 17	700 - 1.6 534 (600 - 1.6)	700 - 2.0 534 (600 - 2.0)	700 - 2.4 534 (600 - 2.4)
● CIRCLING	840 - 3.2 674 (700 - 3.2)	860 - 3.6 694 (700 - 3.6)	1600 - 4.8 1434 (1500 - 4.8)

HI-TACAN RWY 17

60°17.61' N
005°13.09' E

FLESLAND (ENBR)

CHANGES: ATC FRQ ADDED

RNAIF 14 SEP 2017