

TERPS INSTRUMENT APPROACH CHART

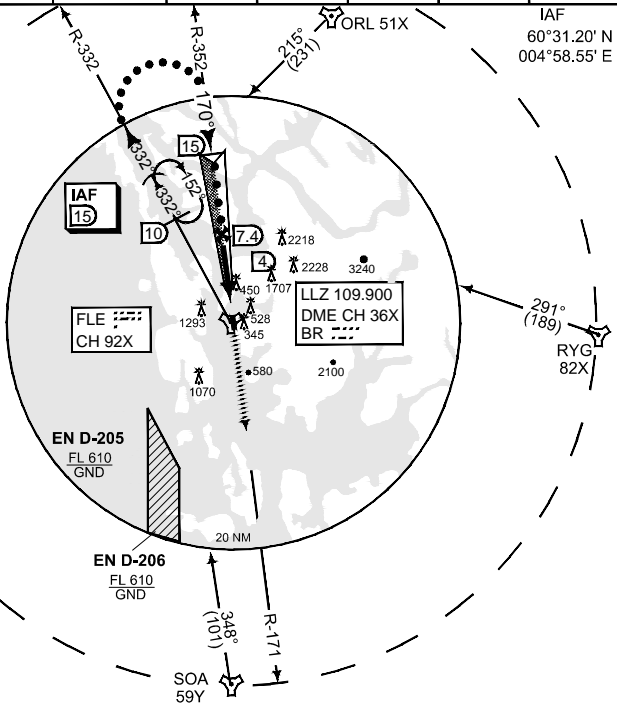
AD ELEV 166

HI-ILS or LOC RWY 17 FLESLAND (ENBR)

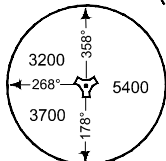
ATIS 125.250	FLESLAND APP 121.000 W 125.000 E	FLESLAND DIRECTOR 118.850	FLESLAND TWR 119.100 122.100	GND 121.900
LOC / TACAN DME BR 109.900/CH 92X	APP COURSE 170°	GS INTCP ALT 2600	GS 3.1°	DA 366
			TDZE 166	ALS 900 m
				LDA 8366

CAUTION:
● CAT E CIRCLING NOT AUTHORIZED EAST OF RWY 17/35

NOTE:
b) DME REQUIRED

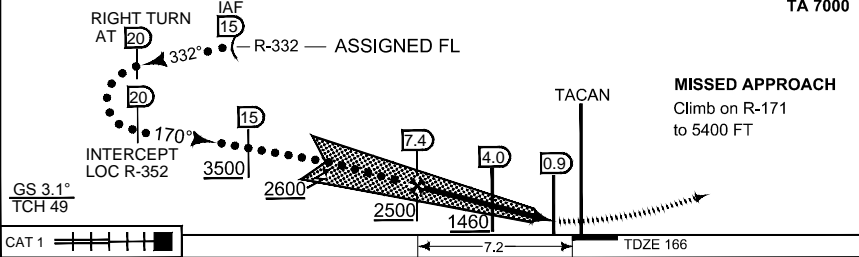


MSA FLE 25 NM



SAFE ALT 100 NM 8600

TA 7000



CATEGORY	C	D	E
S-ILS 17	366 - 1.4 200 (200 - 1.4)		
S-LOC 17	660 - 1.6 494 (500 - 1.6)	660 - 2.0 494 (500 - 2.0)	
● CIRCLING	840 - 3.2 674 (700 - 3.2)	860 - 3.6 694 (700 - 3.6)	1600 - 4.8 1434 (1500 - 4.8)

HI-ILS or LOC RWY 17

60°17.61' N
005°13.09' E

FLESLAND (ENBR)

CHANGES: ATC FRQ ADDED

RNCAF 14 SEP 2017