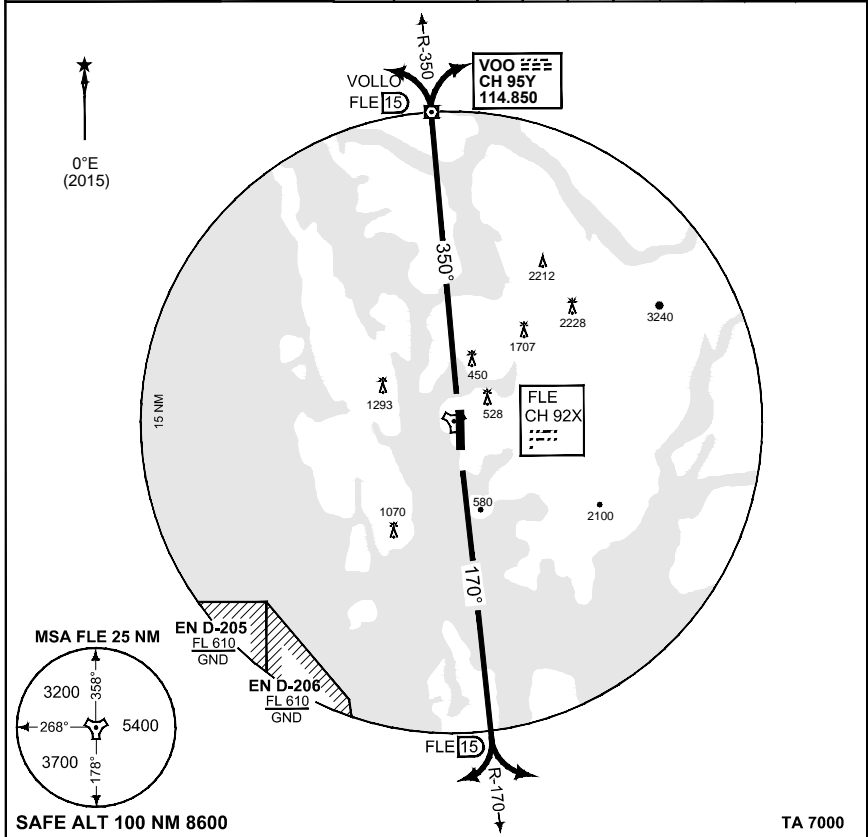


**TERPS  
INSTRUMENT DEPARTURE CHART**

AD ELEV 166

**BRATTA 1C/VOLLO 1D DEPARTURE  
FLESLAND (ENBR)**

ATIS 125.250	FLESLAND GND 121.900	FLESLAND TWR 119.100	FLESLAND DIRECTOR 118.850	FLESLAND APP 121.000 W 125.000 E							
STAVANGER CONTROL 124.700 363.650		RWY	Knots	60	120	180	240	300	360	to	reason
		17/35	V/V (fpm)	300	600	900	1200	1500	1800	4000	ATC



BRATTA 1C (RWY 17)	Climb on FLE R-170 to 15 DME (BTA), then as instructed by ATC Climb to 4000 ft
VOLLO 1D (RWY 35)	Climb on FLE R-350 to 15 DME (VOO), then as instructed by ATC Climb to 4000 ft

CONTACT FLESLAND RADAR 121.000 WHEN AIRBORNE.

CHANGES: ATC FRQ. ADDED

RNOA/F 14 SEP 2017

**BRATTA 1C/VOLLO 1D**

60°17.61' N  
005°13.09' E

**FLESLAND (ENBR)**