

**MIPS INSTRUMENT APPROACH CHART**

AD ELEV 43

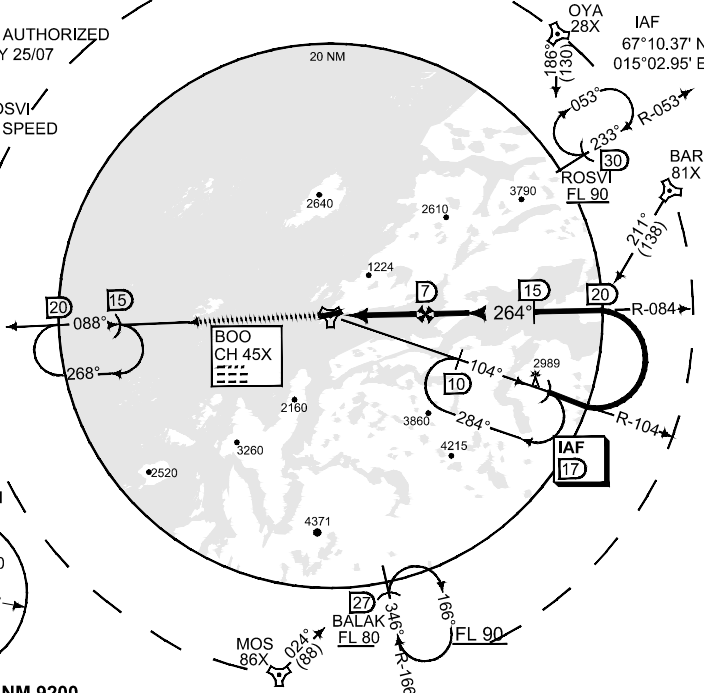
**TACAN A BODOE (ENBO)**

ATIS 123.900	BODOE APP 119.700 124.000 277.300 259.025			BODOE TWR 118.100 398.650 257.800		BODOE GND 121.750 358.475	
TACAN BOO CH 45X	APP COURSE 264°	FAF ALT 3300	MDA <b>SEE CAT</b>				

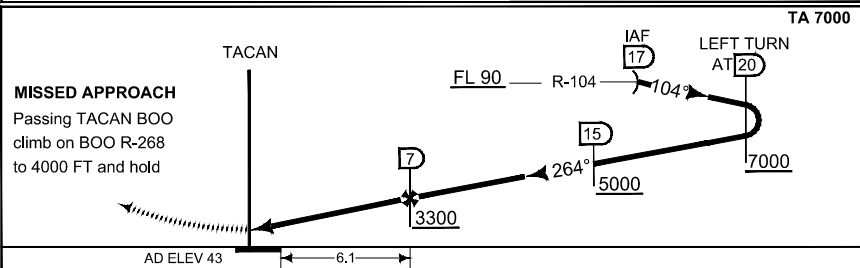
**CAUTION:**  
● CIRCLING NOT AUTHORIZED NORTH OF RWY 25/07

**NOTE:**  
b) BALAK AND ROSVI  
MAX HOLDING SPEED  
230 KIAS

5°E  
(2015)



**SAFE ALT 100 NM 9200**



CATEGORY	B		C		D	
● CIRCLING	1090 - 2.4	1047 (1100 - 2.4)	1300 - 3.7	1257 (1300 - 3.7)	1300 - 4.6	1257 (1300 - 4.6)

CHANGES EDITORIAL  
MIPS

**TACAN A**

67°16.15' N  
014°21.92' E

**BODOE (ENBO)**

RNGA/F 17 SEP 2015