

**MIPS**  
**INSTRUMENT APPROACH CHART**

**ILS M or LOC M RWY 25**  
**BODOE (ENBO)**

ATIS 123.900		BODOE APP 119.700 124.000 277.300 259.025			AD ELEV 43		BODOE TWR 118.100 398.650 257.800		BODOE GND 121.750 358.475	
ILS/DME BD 108.700/CH 24X		APP COURSE 263°	GS INTCP ALT 3000	GS 3.5°	DA SEE CAT	THR ELEV 41	ALS 750 m		LDA 9166	

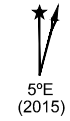
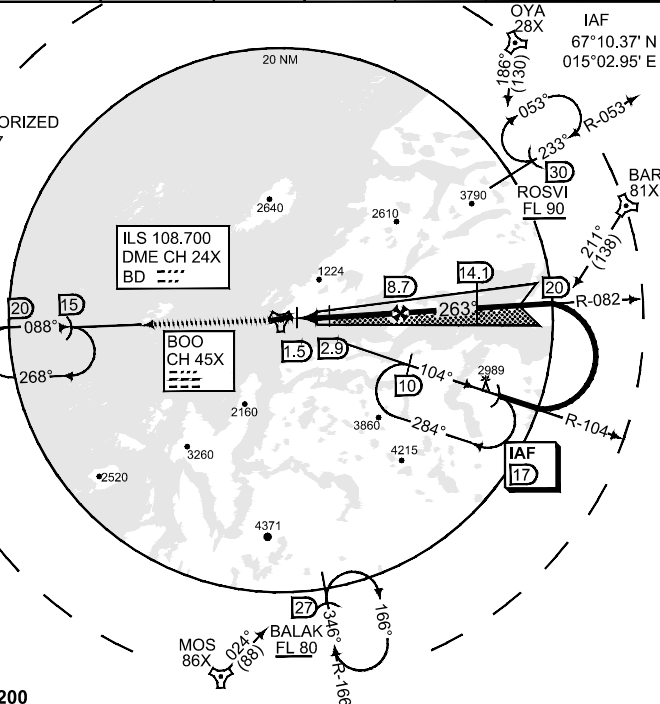
**WARNING:**  
1 LOCALIZER OFFSET  
10° SOUTH OF RWY  
CENTERLINE

**CAUTION:**  
2 CIRCLING NOT AUTHORIZED  
NORTH OF RWY 25/07

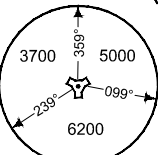
**NOTE:**  
c) DME REQUIRED

**NOTE:**  
d) DME FROM BOO  
UNLESS OTHERWISE  
INDICATED

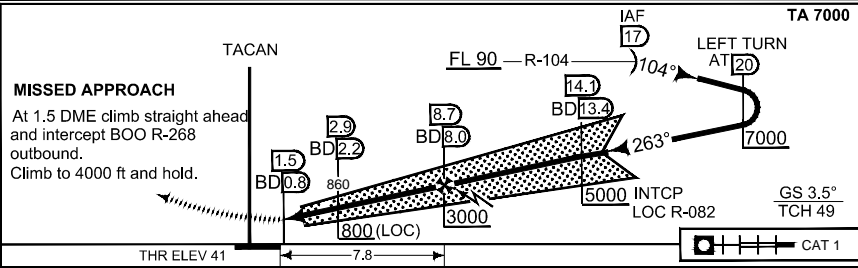
**NOTE:**  
e) BALAK AND ROSVI  
MAX 230 KIAS



**MSA BOO 25 NM**



**SAFE ALT 100 NM 9200**



THR ELEV 41 | 7.8 | CAT 1

MIPS	CATEGORY	B		C		D	
		Alt	Dist	Alt	Dist	Alt	Dist
●	S-ILS 25	388	0.8 347 (400 - 0.8/1.2)	452	- 1.2 411 (500 - 1.2/2.0)	518	- 1.6 477 (500 - 1.6/2.4)
●	S-LOC 25	640	- 0.8 599 (600 - 0.8/1.6)	690	- 2.0 649 (700 - 2.0/2.8)	740	- 2.8 699 (700 - 2.8/3.6)
●	CIRCLING	1090	- 2.4 1047 (1100 - 2.4)	1300	- 3.7 1257 (1300 - 3.7)	1300	- 4.6 1257 (1300 - 4.6)

**ILS M or LOC M RWY 25**

67°16.15' N  
014°21.92' E

**BODOE (ENBO)**

CHANGES: GS INTCP ALT

RNGAF 14 SEP 2017