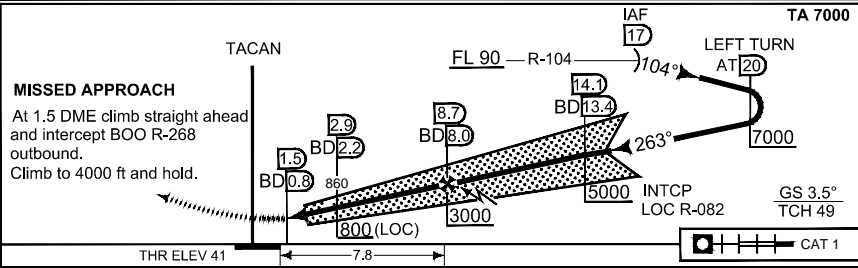
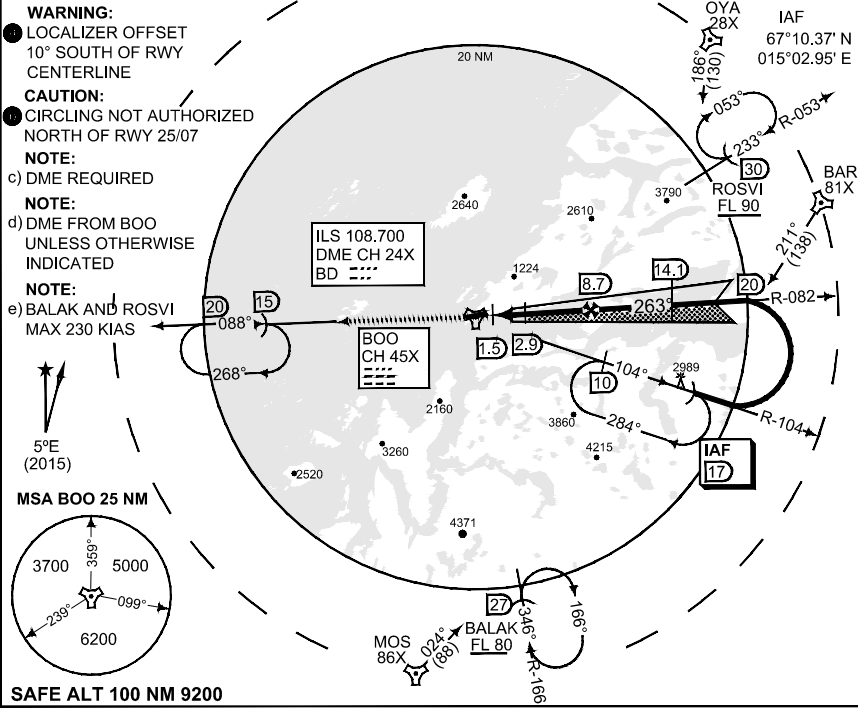


**MIPS INSTRUMENT APPROACH CHART**

**HPMA ILS or LOC RWY 25 BODOE (ENBO)**

ATIS 123.900		BODOE APP 119.700 124.000 277.300 259.025			AD ELEV 43		BODOE TWR 118.100 398.650 257.800		BODOE GND 121.750 358.475	
ILS/DME BD 108.700/CH 24X		APP COURSE 263°	GS INTCP ALT 3000	GS 3.5°	DA 400	THR ELEV 39	ALS 750 m	LDA 9166		



HPMA	HPMA
<p>● S-ILS 25</p> <p>● S-LOC 25</p> <p>● CIRCLING</p>	<p>400 - 1.2 359 (400 - 1.2/2.0)</p> <p>740 - 3.2 699 (700 - 3.2/4.0)</p> <p>1090 - 3.2 1047 (1100 - 3.2)</p>

**HPMA ILS or LOC RWY 25**

67°16.15' N  
 014°21.92' E

**BODOE (ENBO)**

CHANGES: GS INTCP ALT

RNOAF 14 SEP 2017