

MIPS INSTRUMENT APPROACH CHART

AD ELEV 43

HPMA ILS or LOC RWY 07 BODOE (ENBO)

| | | | | | | | |
|------------------------------|--|----------------------|--------------------------------------|-----------|----------------|------------------------------|-------------|
| ATIS 123.900 | BODOE APP 119.700 124.000 277.300 259.025 | | BODOE TWR 118.100 398.650 257.800 | | | BODOE GND 121.750 358.475 | |
| ILS/DME BO 110.300/CH 40X | APP COURSE 073° | GS INTCP ALT 2000 | GS 3.0° | DA 246 | THR ELEV 19 | ALS 900 m | LDA 9166 |

CAUTION:

CIRCLING NOT AUTHORIZED NORTH OF RWY 07/25

NOTE:

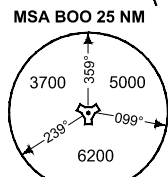
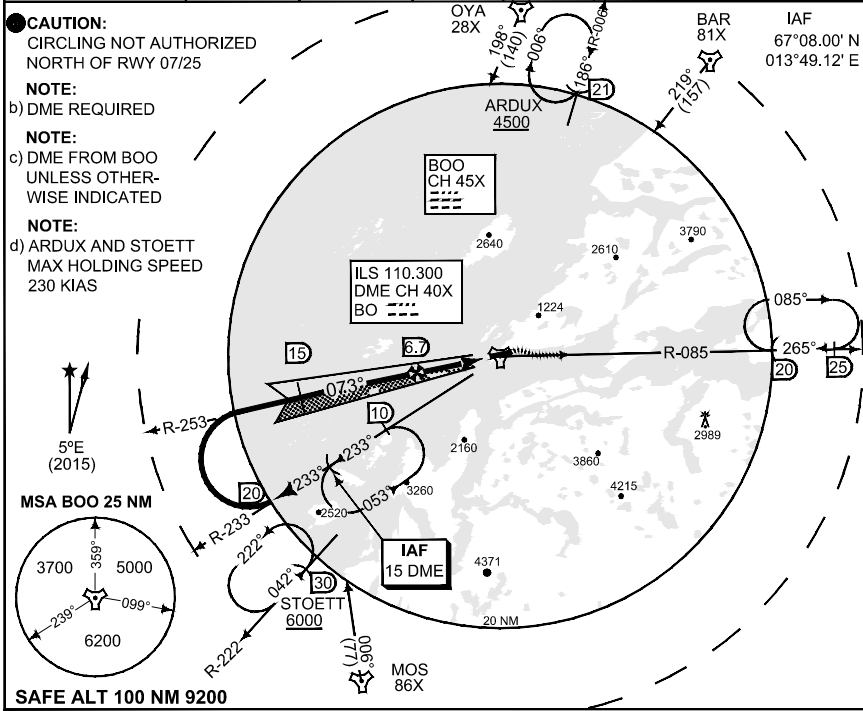
b) DME REQUIRED

NOTE:

c) DME FROM BOO UNLESS OTHERWISE INDICATED

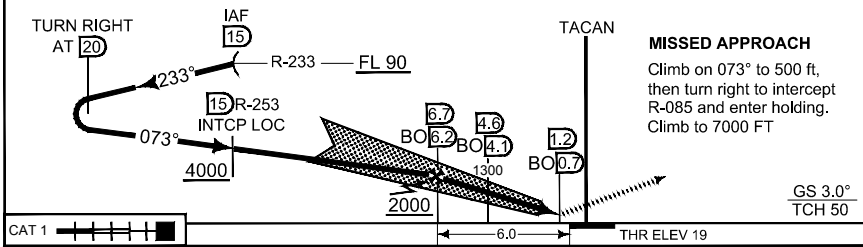
NOTE:

d) ARDUX AND STOETT MAX HOLDING SPEED 230 KIAS

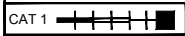


SAFE ALT 100 NM 9200

TA 7000



MISSED APPROACH
Climb on 073° to 500 ft, then turn right to intercept R-085 and enter holding. Climb to 7000 FT



| | |
|------------|--------------------------------------|
| CATEGORY | HPMA |
| S-ILS 07 | 246 - 0.8 227 (300 - 0.8/1.6) |
| S-LOC 07 | 410 - 1.6 391 (400 - 1.6/2.4) |
| ● CIRCLING | 1090 - 3.2 1047 (1100 - 3.2) |

HPMA ILS or LOC RWY 07

67°16.15' N
014°21.92' E

BODOE (ENBO)

CHANGES: EDITORIAL

RNAIF 13 OCT 2016