

**MIPS
INSTRUMENT DEPARTURE CHART**

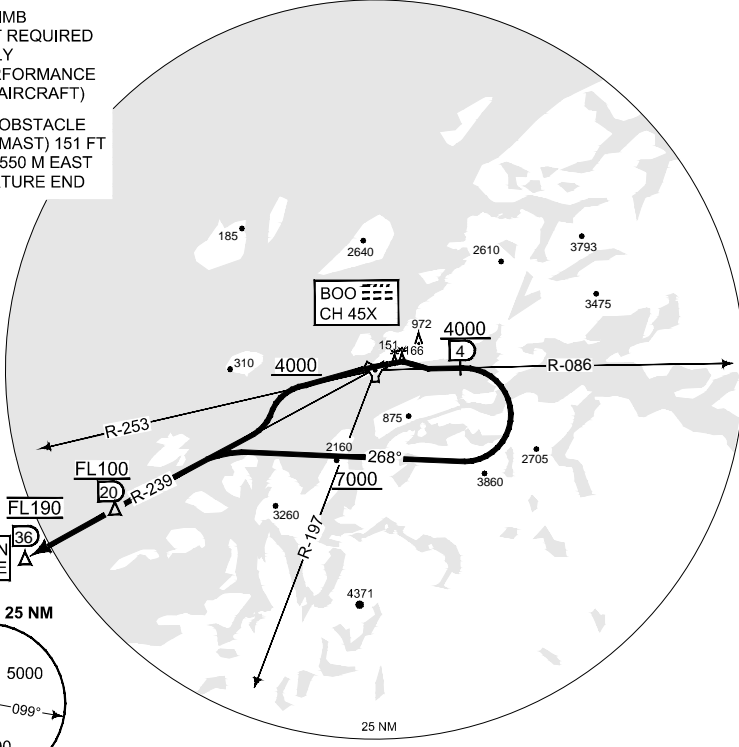
AD ELEV 43

**HPMA SOTON 1A -1B
BODOE (ENBO)**

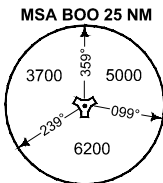
ATIS 123.900	BODOE GND 121.750 358.475	BODOE TWR 118.100 398.650	BODOE DEP 119.700 277.300	NORWAY CONTROL 118.550 240.575						
		RWY	Knots	60	120	180	240	300	360	to
		07	V/V (fpm)	450	900	1350	1800	2250	2700	FL190
		25	V/V (fpm)	550	1100	1650	2200	2750	3300	FL190

NOTE:

- a) STEEP CLIMB
GRADIENT REQUIRED
HPMA ONLY
(HIGH PERFORMANCE
MILITARY AIRCRAFT)
- b) CLOSE IN OBSTACLE
(LIGHTED MAST) 151 FT
LOCATED 550 M EAST
OF DEPARTURE END
RWY 07



SOTON
67°00.00' N
013°00.00' E



SAFE ALT 100 NM 9200

TA 7000

SOTON 1A (RWY 07)	- Minimum 8.75% climb gradient / 5.0° climb angle to FL 190. - Climb on track 073°. Passing 500 ft, turn right to intercept BOO R-086. - Passing 4000 ft or BOO 4 DME, whichever is later, turn right to track 268°. - Cross BOO R-197 at or above 7000 ft. Intercept BOO R-239 outbound to SOTON. - Cross BOO 20 DME at minimum FL 100. Climb to FL 190.
SOTON 1B (RWY 25)	- Minimum 9.1% climb gradient / 5.2° climb angle to FL 190. - Climb on BOO R-253. Passing 4000 ft, turn left to intercept BOO R-239. - Follow BOO R-239 to SOTON. Cross BOO 20 DME at minimum FL 100. Climb to FL 190.

When instructed by Bodoie TWR, contact DEP 119.700 or 277.300
Standard speed until on intercept heading to BOO R-239: 300 KIAS

CHANGES: ATC CONTACT PROC

RNGAIF 08 DEC 2016

SOTON 1A - 1B

67°16.15' N
014°21.92' E

BODOE (ENBO)