

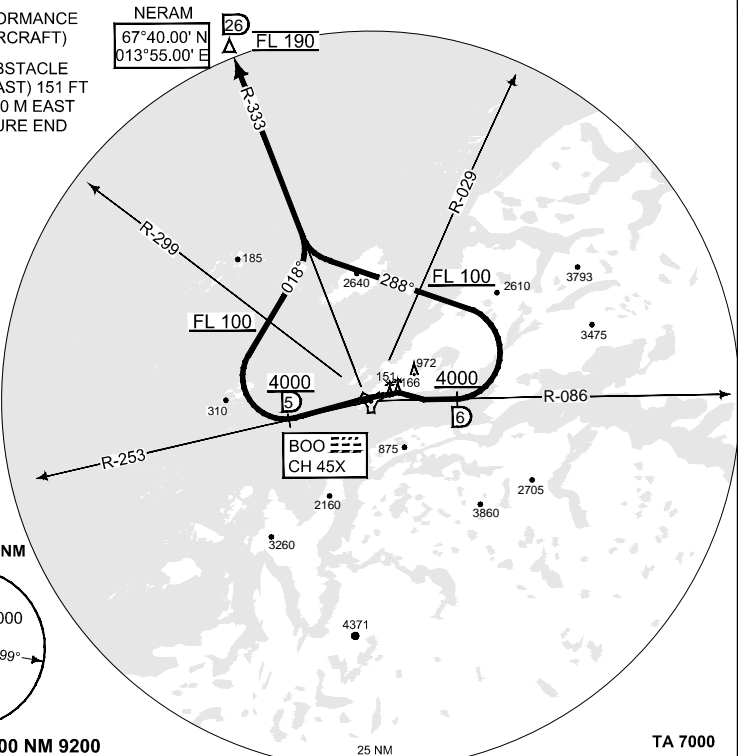
MIPS
INSTRUMENT DEPARTURE CHART

AD ELEV 43

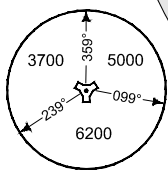
HPMA NERAM 1A - 1B
BODOE (ENBO)

ATIS 123.900	BODOE GND 121.750 358.475	BODOE TWR 118.100 398.650	BODOE DEP 119.700 277.300	NORWAY CONTROL 126.450 278.050			
				RWY	Knots	60 120 180 240 300 350	to
				07	V/V (fpm)	680 1360 2040 2720 3400 3970	FL 100
					V/V (fpm)	375 750 1125 1500 1875 2190	FL 190
				25	V/V (fpm)	890 1780 2670 3560 4450 5200	FL 100
					V/V (fpm)	440 880 1320 1760 2200 2570	FL 190

- NOTE:**
- a) STEEP CLIMB
GRADIENT REQUIRED
HPMA ONLY
(HIGH PERFORMANCE
MILITARY AIRCRAFT)
- b) CLOSE IN OBSTACLE
(LIGHTED MAST) 151 FT
LOCATED 550 M EAST
OF DEPARTURE END
RWY 07



MSA BOO 25 NM



SAFE ALT 100 NM 9200

TA 7000

NERAM 1A (RWY 07)	<ul style="list-style-type: none"> - Minimum 11.2% climb gradient / 6.4° climb angle required up to FL 100. - Climb on track 073°. Passing 500 ft, turn right to intercept BOO R-086. Passing 4000 ft or BOO 6 DME, whichever is later, turn left to track 288°. Cross BOO R-029 at minimum FL 100. Intercept BOO R-333 to NERAM. Climb to FL 190.
NERAM 1B (RWY 25)	<ul style="list-style-type: none"> - Minimum 14.7% climb gradient / 8.4° climb angle required up to FL 100. - Climb on BOO R-253. Passing 4000 ft or BOO 5 DME, whichever is later, turn right to track 018°. Cross BOO R-299 at minimum FL 100. Intercept BOO R-333 to NERAM. Climb to FL 190.

When instructed by Bodoe TWR, contact DEP 119.700 or 277.300
Standard speed until on intercept heading to BOO R-333: 300 KIAS

CHANGES: ATC CONTACT PROC

FRNOAF 08 DEC 2016

HPMA NERAM 1A - 1B

67°16.15' N
014°21.92' E

BODOE (ENBO)