

**MIPS
INSTRUMENT DEPARTURE CHART**

AD ELEV 43

**HPMA SALTY 2 - HPMA BITNO 1A/1B
BODOE (ENBO)**

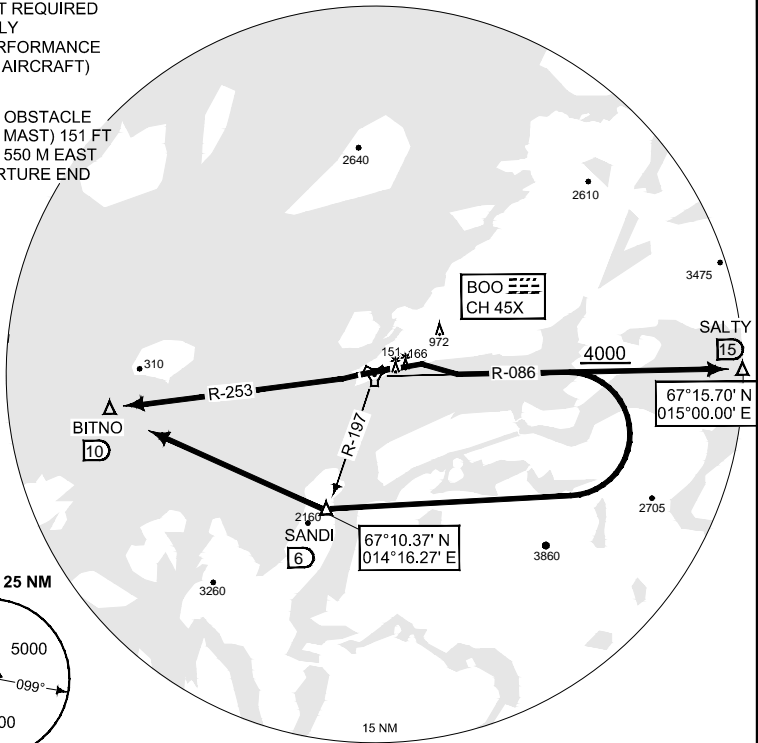
ATIS 123.900	BODOE GND 121.750 358.475	BODOE TWR 118.100 398.650	BODOE DEP 119.700 277.300
NORWAY CONTROL (FREQ ASSIGNED BY ATC) 126.450 269.150 118.550 240.575			

NOTE:

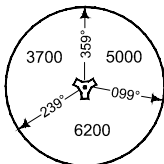
- a) STEEP CLIMB
GRADIENT REQUIRED
HPMA ONLY
(HIGH PERFORMANCE
MILITARY AIRCRAFT)

NOTE:

- b) CLOSE IN OBSTACLE
(LIGHTED MAST) 151 FT
LOCATED 550 M EAST
OF DEPARTURE END
RWY 07



MSA BOO 25 NM



SAFE ALT 100 NM 9200

TA 7000

SALTY 2 (RWY 07)	- Minimum 8.75% climb gradient / 5.0° climb angle to 4000 ft. - Climb on 073°. Passing 500 ft, turn right to intercept BOO R-086. Proceed to SALTY, climb to 7000 ft.
BITNO 1A (RWY 07)	- Minimum 8.75% climb gradient / 5.0° climb angle to 4000 ft. - Climb on 073°. Passing 500 ft, turn right to intercept BOO R-086. Passing 4000 ft, turn right direct SANDI, then BITNO. Climb to 7000 ft.
BITNO 1B (RWY 25)	- Minimum 8.75% climb gradient / 5.0° climb angle to 4000 ft. - Climb on R-253 to BITNO. Climb to 7000 ft.

When instructed by Bodoe TWR, contact DEP 119.700 or 277.300

Standard speed until HDG west: 300 KIAS

CHANGES: ATC CONTACT PROC.

FRNOAF 08 DEC 2016

HPMA SALTY 2 - HPMA BITNO 1A/1B

67°16.15' N
014°21.92' E

BODOE (ENBO)