

MIPS INSTRUMENT APPROACH CHART

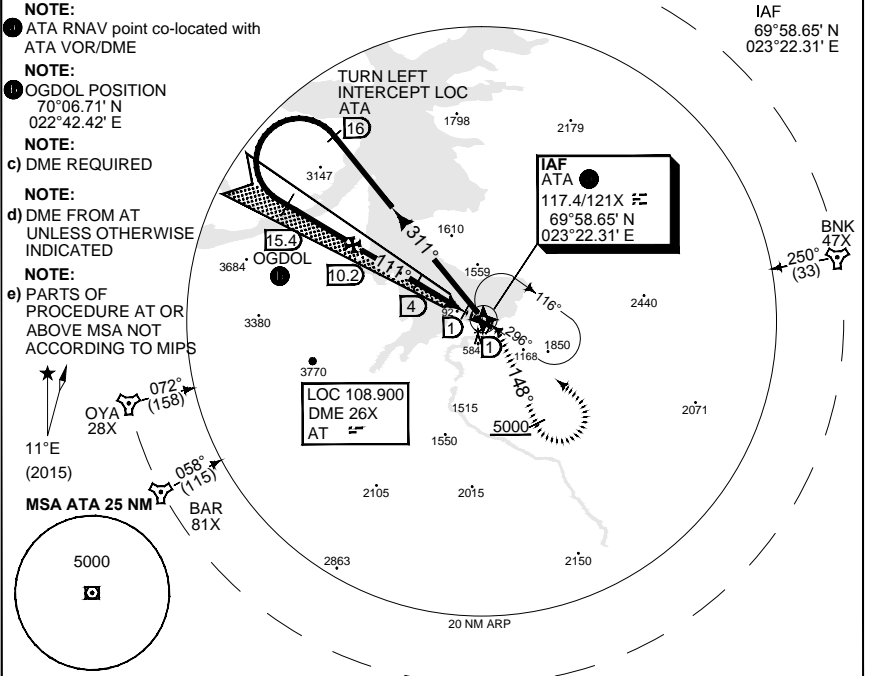
AD ELEV 10

HPMA ILS or LOC RWY 11 ALTA(ENAT)

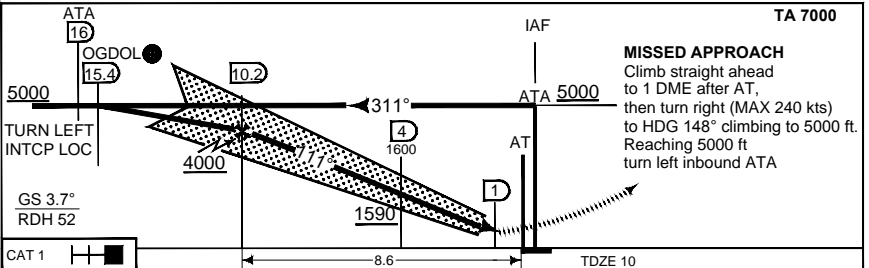
ATIS 118.175	ALTA APP 120.400	ALTA TWR 120.400 118.100					
LOCALIZER/DME AT 108.900/CH 26X	APP COURSE 111°	GS INTCP ALT 5000	GS 3.7°	DA 525	THR ELEV 10	ALS 288 m	LDA 6072

- NOTE:**
 1) ATA RNAV point co-located with ATA VOR/DME
- NOTE:**
 10) OGDOL POSITION
 70°06.71' N
 022°42.42' E
- NOTE:**
 c) DME REQUIRED
- NOTE:**
 d) DME FROM AT UNLESS OTHERWISE INDICATED
- NOTE:**
 e) PARTS OF PROCEDURE AT OR ABOVE MSA NOT ACCORDING TO MIPS

IAF
 69°58.65' N
 023°22.31' E



SAFE ALTITUDE 100NM 8300



CATEGORY	HPMA		
S-ILS 11	525	-2.8	515 (600 - 2.8/2.8)
S-LOC 11	630	-3.6	620 (700 - 3.6/3.6)
CIRCLING	NOT AUTHORIZED		

HPMA ILS or LOC RWY 11

69°58.57' N
 023°22.30' E

ALTA(ENAT)

CHANGES: MVAR
 MIPS

RNAIF 14 SEP 2017